



PRECISION

**TURBO &
ENGINE**

2012
PRODUCT CATALOG



BRAD BRAND

Photo by Mike Galimi

Outlaw 10.5W Record Holder



WELCOME TO THE WORLD OF REAL

high performance

Founded in 1987, **Precision Turbo and Engine** is one of the world's foremost manufacturers of **high performance, aftermarket turbochargers**. Our manufacturing facility, conveniently located in Northwest Indiana, has been a worldwide supplier of high performance turbochargers that have set the standard for **uncompromised quality** and **unsurpassed performance** since the late 1990s. Over the years, we have designed and manufactured record setting and championship winning turbochargers for all racing organizations, as well as **Original Equipment Manufacturers** such as **General Motors**. As we continue to expand our operations and product offerings, you can count on PTE to plan for all your future needs.



In addition to our line of **high performance turbochargers, wastegates, heat exchangers, and fuel injectors**, we are also a top distributor many other performance products such as **fuel system components, stand alone engine management systems, and data acquisition systems**. We are truly a one-stop solution for all your high performance needs. Our knowledgeable and friendly staff has over 100 years of combined knowledge of **turbocharged** vehicles. PTE is committed to providing full technical support on each and every product sold - put our expertise to work for you!

With a wide range of product lines and thousands of SKU numbers available for immediate shipment from our centrally located facility in the Midwest, Precision Turbo & Engine is ready to help boost you straight to the finish line. Our fully computerized ordering and shipping departments allow us to process and ship orders throughout the United States and around the world. Marketing programs with special reseller and retail promotions along with updated price sheets and technical information are sent out to all registered dealers on a quarterly basis.

www.precisionturbo.net



PRECISION'S racing heritage

Precision Turbo's racing heritage can be dated back to 1989, when PTE owner and president **Harry Hruska** worked with **John Lingenfelter** on his Bonneville Land Speed record setting Trans Am. At the time, it set the record for the fastest full-body sedan, running an amazing 298 MPH. Other notable events that Precision Turbo is proud to have been a part of include **Mike Murillo's** 4 Fun Ford Weekend Street Outlaw Championships, **John Kolivas's** 3 straight National Mustang Racers Association Drag Radial Championships, **Titan Motorsports** 3 straight NHRA Sport Compact Pro RWD Championships, **Larry Larson's** four time Unlimited Hot Rod Drag Week Championship winning Nova, **Mike Moran's** Monte Carlo breaking the 5 second barrier for a turbocharged doorslammer, **Chris Tuten** being the first to break the 200 MPH barrier in Super Street Outlaw and **Brad Personett's** record setting NHRA Pro Modified 1968 Camaro.



Since 2008, **Precision Turbo and Engine** customers have compiled over **65 World Championships** and set over **128 World Records**. This is a feat that no other Forced Induction manufacturer can claim. Precision-boosted vehicles have set numerous records and won championships in a wide array of racing sanctioning bodies including **NHRA, ADRL, NTPA, PPL, NMRA, NMCA, NSCRA, PSCA, ORSCA, WCHRA, Fun Ford, NDRC, NOPI, and NSCA**.

PTE customers have also found great success in the world of tractor pulling, truck pulling, time attack, road racing, drifting, autocross, on the Bonneville Salt Flats and on the water with modified jet skis and race boats!

MAILING ADDRESS

Precision Turbo & Engine
P.O. Box 425 | Hebron, IN 46341

SHIPPING ADDRESS

Precision Turbo & Engine
616A South Main Street | Hebron, IN 46341



facebook.com/PrecisionTurbo



twitter.com/PrecisionTurbo



youtube.com/precisionturbonet

PHONE: 219.996.7832 | FAX: 219.996.7749

www.precisionturbo.net



2012 PRODUCT CATALOG

| | |
|---|---------|
| CHAMPIONS & RECORD HOLDERS | 3 - 4 |
| NEW PRODUCTS FOR 2012 . . . | 5 |
| PRECISION GEAR | 6 |
| PRECISION TURBOCHARGERS | |
| 590 - 2800 hp | 7 - 11 |
| BUICK & Sy/Ty TURBOCHARGERS | 12 |
| CLASS LEGAL TURBOCHARGERS | |
| 1400 - 1950 hp | 13 |
| ENTRY LEVEL TURBOCHARGERS | |
| 355 - 1000 hp | 14 - 16 |
| DIRECT REPLACEMENT TURBOCHARGERS | 17 |
| TURBINE HOUSING OPTIONS . | 18 |
| TURBINE HOUSING TECH INFO & COMPRESSOR COVERS | 19 - 21 |
| TURBOCHARGER ACCESSORIES | 22 |
| BOOST CONTROL | 23 - 24 |
| AIR-TO-AIR INTERCOOLER CORES | 25 |
| COMPLETE AIR-TO-AIR INTERCOOLERS | 26 |
| LIQUID-TO-AIR INTERCOOLERS . | 27 - 28 |
| FUEL SYSTEM COMPONENTS . . | 29 |
| FUEL INJECTORS | 30 |
| ENGINE MANAGEMENT SYSTEMS | 31 |
| DATA ACQUISITION | 32 |
| THROTTLE BODIES / INTAKE PLENUMS | 33 |
| WARRANTIES / POLICIES | 34 |

**Mike Murillo**

NMRA Pro Outlaw 10.5W Champion
 NMRA Pro Outlaw 10.5W ET and MPH Record Holder:
 6.624 ET and 217.45 MPH
 NMCA Super Street 10.5W Champion
 NMCA Super Street 10.5W ET Record Holder: 6.580 ET

**Melanie Troxell**

NHRA Pro Modified's Quickest and Fastest Turbo Car
 NHRA Pro Modified ET and MPH Record Holder:
 5.772 ET and 258.71 MPH

**Sean Lyon**

NMRA Drag Radial ET and MPH Record Holder:
 7.533 ET and 188.15 MPH

**Andreas Artursson**

World's Quickest and Fastest LS Powered Car: 6.73 @ 205 MPH

**Brant Campbell**

PSCA Extreme Drag Radial Champion

**Pete Harrell/
Eric McMillion**

X275 Pro-X Challenge Champion

**David Hance**

Northeast Pro Mod MPH Record Holder: 249 MPH

**Ryan Salenbien**

NTPA Super Farm Champion

**George Poteet's Blowfish
(Driven by Danny Bourrows)**

Bonneville Salt Flats B/BFCC Record Holder: 307.99 MPH

**Jeremy Teasley/
Adams Performance**

AMA Pro Street MPH Record Holder: 210.14 MPH

**Brad Brand**

World's 1st 10.5W Tire Equipped Vehicle in the 5s (1/4 mile)
 World's Quickest ET on a 10.5W tire: 5.942
 5.942 @ 234.04 MPH

**Chris Miller**

World's Quickest and Fastest Sport Front Wheel Drive Vehicle:
 8.37 @ 184 MPH

**Anthony Disomma/
Punisher Racing**

World's Fastest Turbo Outlaw 10.5W Car in the 1/8th Mile:
 200.59 MPH

**Tim Reed**

Hot Rod Drag Week Small Block Power Adder Champion

**John Carter**

World's Fastest Outlaw Drag Radial
 (1/8th Mile): 185.95 MPH

**Jason White**

Buick TSM ET and MPH Record Holder: 8.96 @ 153 MPH

**Jose Gonzalez**

Shakedown at E-Town Blown Pro Mod Champion
 SCSN Pro Street Champion

**Bruno Massel**

Shakedown at Palm Beach Pro Outlaw Champion

& RECORD HOLDERS



Willard Kinzer

NMCA Super Street 10.5W MPH Record Holder: 239.91 MPH



Larry Larson

2011 Hot Rod Drag Week Unlimited Champion
(4th Consecutive Year)



Rod Tarr

ITPA 3.0" Truck Pulling Champion



John Carinci

OSCA Super Street Champion
OSCA Super Street 1/8th Mile ET Record Holder: 4.31 ET



**D&D Motorsports/Hypersports
Mike Everson/Glenn Hall**

Dynotech Snowmobile Horsepower Record: 604HP



Clint Hairston

World's Quickest and Fastest Small Block Door Car:
5.91 @ 247 MPH



CamelToe Racing's Speed Demon

Fastest Speed Ever Recorded for an Automotive Engine Powered Vehicle: Entry Speed 452.944 MPH, Exit Speed 462.345 MPH



Domenic Luppino

Australian Pro Street Association Pro Street Blown ET and MPH Record Holder: 6.93 ET and 213.70 MPH



Daniel Nunziante

Australian Pro Street Association Modified Street Blown ET and MPH Record Holder: 7.19 ET and 201.70 MPH



Steven Petrovski

Australia's Quickest and Fastest LS Powered Vehicle:
6.94 @ 207.58 MPH



Johnny Bohmer

Guinness World Record Holder for Fastest Standing Mile in a Street Car: 223.42 MPH



Jason Enos

World's Quickest Turbo Outlaw 10.5W Car in the 1/8th Mile:
4.11 ET



Jeff Kyle

PSCA Wild Street ET and MPH Record Holder:
7.58 @ 189.39 MPH



Rob Hall

TS Outlaw 2.6 Class Champion
FASS Nationals 2.6 Class Champion



Hennessey Venom GT

"Fastest Car in the World" by Top Gear



Tim Lynch

Civil War Rockingham Outlaw 10.5W Champion
NHRA Unleashed SGMP Outlaw 10.5W Champion



Alex Vrettos

Radial Revolution Outlaw Drag Radial Champion
Yellowbullet.com Nationals Outlaw Drag Radial Champion



Brad Medlock

World's Quickest Turbo X275 Vehicle: 4.78 ET

PRECISION TURBO & ENGINE***new 2012 products***

Precision Turbo is committed to bringing the most technologically advanced products to the high performance aftermarket while our customers continue to set the pace with 10 Championships and 32 Record Holders in the 2011 Racing Season.

Continuing to provide the latest and greatest in turbo technology, PTE has expanded its line of highly-successful Competition Engineered Aerodynamics (CEA) compressor wheels to include new sizes, such as the highly anticipated 64mm wheel. Furthermore, we have introduced our high-flow CEA turbine wheels into the product line which can provide an additional 20-45 horsepower over traditional wheels of the same size.

Other exciting new products for 2012 include the first-ever Precision Turbo & Engine 52mm and 66mm Blow Off Valves, stainless steel V-band inlet/outlet turbine housings, and many new additions to our Entry Level line of turbochargers.

NEW**PT6466**

See Page 8

**PTE's
Blow Off
Valve**

See Page 24

**CEA
Turbine
Wheel****Stainless
Steel
Turbine
Housing**

**As we continue to innovate and expand our product line,
you can expect to see more new products in 2012 to
help keep you ahead of the competition!**

OFFICIAL PRECISION TURBO & ENGINE gear & apparel

Our apparel is made from 100% pure cotton and preshrunk to ensure a great fit. Heavy weight, durable and comfortable, a PTE shirt should be the next "performance part" that you purchase for your wardrobe.



T-Shirt

You may not want people knowing exactly what you've got under your hood, but you've got Precision pride and like showing it off. Featuring the Precision Turbo & Engine logo on the front, this tee also has a graphic of a turbo compressor cover and the PTE logo across the back shoulders.

Available in sizes:
Small (S) through 5 Extra Large (5XL)



T-Shirt (Ladies)

This shirt is specifically designed for Precision boosted ladies! Featuring a flattering, feminine cut, this V-neck tee also has a very special pink PTE logo and pink turbo compressor cover design!

Available in sizes:
Extra Small (XS) through Extra Large (XL)



Hoodie

Want to show the world that you're Precision boosted even in colder weather? This ultra-comfortable hoodie will help you look good and go fast, complete with a turbo compressor cover design on the front and a PTE logo on the back.

Available in sizes:
Small (S) through 5 Extra Large (5XL)



Mechanic Shirt

Stay clean and look good while you get your car ready for the race season with this great PTE mechanic shirt. Featuring the Precision Turbo & Engine logo on the front and back, this shirt also has graphic of a turbo compressor cover.

Available in sizes:
Small (S) through 5 Extra Large (5XL)



Long-Sleeve Tee

Similar to the PTE t-shirts you already know and love, this long-sleeve version offers a bit more warmth for those in-between seasons and is perfect for late nights at the track. Featuring the Precision Turbo & Engine logo on the front and back, this long sleeve tee also has graphic of a turbo compressor cover.

Available in sizes:
Small (S) through 5 Extra Large (5XL)



Hat

If you're like us, you spend your days at the track under the sun. Keep cool with a great new hat from Precision! Featuring an embroidered Precision Turbo & Engine logo on the front, this hat also has "Boosted Technology" across the back.

"Flexfit" brand for the ultimate in custom fit and are available in sizes:
Small/Medium (S/M) and Large/Extra Large (L/XL)



PRECISION TURBO & ENGINE

590 - 950 HP **Turbochargers**

PT5558



PT5858



PT6266

**590HP**

| PART NUMBER | MODEL NUMBER | COMPRESSOR WHEEL | TURBINE WHEEL | COMPRESSOR COVER | EXHAUST HOUSING | BALL BEARING OPTION AVAILABLE |
|--------------|--------------|---|---|------------------|-----------------|-------------------------------|
| PTB 205-5558 | 5558B | 2.165" (54.9mm) Ind/3.000" (76.2mm) Exd | 2.555" (64.90mm) Ind/2.280" (57.91mm) Exd | B (See Page 21) | Option Group A | Yes |
| PTB 305-5558 | 5558E | 2.165" (54.9mm) Ind/3.000" (76.2mm) Exd | 2.555" (64.90mm) Ind/2.280" (57.91mm) Exd | E (See Page 21) | Option Group A | Yes |
| PTB 405-5558 | 5558S | 2.165" (54.9mm) Ind/3.000" (76.2mm) Exd | 2.555" (64.90mm) Ind/2.280" (57.91mm) Exd | S (See Page 21) | Option Group A | Yes |
| PTB 505-5558 | 5558SP | 2.165" (54.9mm) Ind/3.000" (76.2mm) Exd | 2.555" (64.90mm) Ind/2.280" (57.91mm) Exd | SP (See Page 21) | Option Group A | Yes |

620HP

| PART NUMBER | MODEL NUMBER | COMPRESSOR WHEEL | TURBINE WHEEL | COMPRESSOR COVER | EXHAUST HOUSING | BALL BEARING OPTION AVAILABLE |
|--------------|--------------|---|---|------------------|-----------------|-------------------------------|
| PTB 205-5858 | 5858B | 2.285" (58.0mm) Ind/3.000" (76.2mm) Exd | 2.555" (64.90mm) Ind/2.280" (57.91mm) Exd | B (See Page 21) | Option Group A | Yes |
| PTB 305-5858 | 5858E | 2.285" (58.0mm) Ind/3.000" (76.2mm) Exd | 2.555" (64.90mm) Ind/2.280" (57.91mm) Exd | E (See Page 21) | Option Group A | Yes |
| PTB 505-5858 | 5858SP | 2.285" (58.0mm) Ind/3.000" (76.2mm) Exd | 2.555" (64.90mm) Ind/2.280" (57.91mm) Exd | SP (See Page 21) | Option Group A | Yes |

640HP

| PART NUMBER | MODEL NUMBER | COMPRESSOR WHEEL | TURBINE WHEEL | COMPRESSOR COVER | EXHAUST HOUSING | BALL BEARING OPTION AVAILABLE |
|--------------|--------------|---|--|------------------|-----------------|-------------------------------|
| PTB 205-5862 | 5862B | 2.285" (58.0mm) Ind/3.000" (76.2mm) Exd | 2.795" (71.0mm) Ind/2.437" (61.90mm) Exd | B (See Page 21) | Option Group B | Yes |
| PTB 305-5862 | 5862E | 2.285" (58.0mm) Ind/3.000" (76.2mm) Exd | 2.795" (71.0mm) Ind/2.437" (61.90mm) Exd | E (See Page 21) | Option Group B | Yes |
| PTB 505-5862 | 5862SP | 2.285" (58.0mm) Ind/3.000" (76.2mm) Exd | 2.795" (71.0mm) Ind/2.437" (61.90mm) Exd | SP (See Page 21) | Option Group B | Yes |

705HP

| PART NUMBER | MODEL NUMBER | COMPRESSOR WHEEL | TURBINE WHEEL | COMPRESSOR COVER | EXHAUST HOUSING | BALL BEARING OPTION AVAILABLE |
|--------------|--------------|---|--|------------------------|-----------------|-------------------------------|
| PTB 305-6262 | 6262E | 2.450" (62.23mm) Ind/3.228" (81.99mm) Exd | 2.795" (71.0mm) Ind/2.437" (61.90mm) Exd | E (See Page 21) | Option Group B | Yes |
| PTB 405-6262 | 6262S | 2.450" (62.23mm) Ind/3.228" (81.99mm) Exd | 2.795" (71.0mm) Ind/2.437" (61.90mm) Exd | S (See Page 21) | Option Group B | Yes |
| PTB 505-6262 | 6262SP | 2.450" (62.23mm) Ind/3.228" (81.99mm) Exd | 2.795" (71.0mm) Ind/2.437" (61.90mm) Exd | Ported S (See Page 21) | Option Group B | Yes |

"I kinda have a crush on the
6262 CEA ball bearing."
- John Quackenbush



Jorge Lazcano
Twin PT6266 Turbochargers
Custom PT2000 Liquid-to-Air Intercooler

735HP

| PART NUMBER | MODEL NUMBER | COMPRESSOR WHEEL | TURBINE WHEEL | COMPRESSOR COVER | EXHAUST HOUSING | BALL BEARING OPTION AVAILABLE |
|--------------|--------------|---|--|------------------------|-----------------|-------------------------------|
| PTB 305-6266 | 6266E | 2.450" (62.23mm) Ind/3.228" (81.99mm) Exd | 2.920" (74.17mm) Ind/2.600" (66.0mm) Exd | E (See Page 21) | Option Group C | Yes |
| PTB 405-6266 | 6266S | 2.450" (62.23mm) Ind/3.228" (81.99mm) Exd | 2.920" (74.17mm) Ind/2.600" (66.0mm) Exd | S (See Page 21) | Option Group C | Yes |
| PTB 505-6266 | 6266SP | 2.450" (62.23mm) Ind/3.228" (81.99mm) Exd | 2.920" (74.17mm) Ind/2.600" (66.0mm) Exd | Ported S (See Page 21) | Option Group C | Yes |

850HP

| PART NUMBER | MODEL NUMBER | COMPRESSOR WHEEL | TURBINE WHEEL | COMPRESSOR COVER | EXHAUST HOUSING | BALL BEARING OPTION AVAILABLE |
|--------------|--------------|---|--|------------------------|-----------------|-------------------------------|
| PTB 600-7068 | 70HPQH | 2.756" (70.00mm) Ind/3.502" (88.95mm) Exd | 3.111" (79.0mm) Ind/2.693" (68.40mm) Exd | H (See Page 21) | Option Group D | Yes |
| PTB 650-7068 | 70HPQHP | 2.756" (70.00mm) Ind/3.502" (88.95mm) Exd | 3.111" (79.0mm) Ind/2.693" (68.40mm) Exd | Ported H (See Page 21) | Option Group D | Yes |

885HP

| PART NUMBER | MODEL NUMBER | COMPRESSOR WHEEL | TURBINE WHEEL | COMPRESSOR COVER | EXHAUST HOUSING | BALL BEARING OPTION AVAILABLE |
|--------------|--------------|---|--|------------------------|-----------------|-------------------------------|
| PTB 600-7075 | 70HPSH | 2.756" (70.00mm) Ind/3.502" (88.95mm) Exd | 3.228" (82mm) Ind/2.956" (75.08mm) Exd | H (See Page 21) | Option Group E | Yes |
| PTB 650-7075 | 70HPSHP | 2.756" (70.00mm) Ind/3.502" (88.95mm) Exd | 3.228" (82mm) Ind/2.956" (75.08mm) Exd | Ported H (See Page 21) | Option Group E | Yes |

935HP

| PART NUMBER | MODEL NUMBER | COMPRESSOR WHEEL | TURBINE WHEEL | COMPRESSOR COVER | EXHAUST HOUSING | BALL BEARING OPTION AVAILABLE |
|--------------|--------------|---|--|------------------------|-----------------|-------------------------------|
| PTB 305-6766 | 6766E | 2.655" (67.44mm) Ind/3.477" (88.32mm) Exd | 2.920" (74.17mm) Ind/2.600" (66.0mm) Exd | E (See Page 21) | Option Group C | Yes |
| PTB 405-6766 | 6766S | 2.655" (67.44mm) Ind/3.477" (88.32mm) Exd | 2.920" (74.17mm) Ind/2.600" (66.0mm) Exd | S (See Page 21) | Option Group C | Yes |
| PTB 505-6766 | 6766SP | 2.655" (67.44mm) Ind/3.477" (88.32mm) Exd | 2.920" (74.17mm) Ind/2.600" (66.0mm) Exd | Ported S (See Page 21) | Option Group C | Yes |
| PTB 605-6766 | 6766H | 2.655" (67.44mm) Ind/3.477" (88.32mm) Exd | 2.920" (74.17mm) Ind/2.600" (66.0mm) Exd | H (See Page 21) | Option Group C | Yes |
| PTB 655-6766 | 6766HP | 2.655" (67.44mm) Ind/3.477" (88.32mm) Exd | 2.920" (74.17mm) Ind/2.600" (66.0mm) Exd | H (See Page 21) | Option Group C | Yes |
| PTB 305-6768 | 6768E | 2.655" (67.44mm) Ind/3.477" (88.32mm) Exd | 3.111" (79.0mm) Ind/2.693" (68.40mm) Exd | E (See Page 21) | Option Group D | Yes |
| PTB 405-6768 | 6768S | 2.655" (67.44mm) Ind/3.477" (88.32mm) Exd | 3.111" (79.0mm) Ind/2.693" (68.40mm) Exd | S (See Page 21) | Option Group D | Yes |
| PTB 505-6768 | 6768SP | 2.655" (67.44mm) Ind/3.477" (88.32mm) Exd | 3.111" (79.0mm) Ind/2.693" (68.40mm) Exd | Ported S (See Page 21) | Option Group D | Yes |
| PTB 605-6768 | 6768H | 2.655" (67.44mm) Ind/3.477" (88.32mm) Exd | 3.111" (79.0mm) Ind/2.693" (68.40mm) Exd | H (See Page 21) | Option Group D | Yes |
| PTB 655-6768 | 6768HP | 2.655" (67.44mm) Ind/3.477" (88.32mm) Exd | 3.111" (79.0mm) Ind/2.693" (68.40mm) Exd | H (See Page 21) | Option Group D | Yes |

945HP

| PART NUMBER | MODEL NUMBER | COMPRESSOR WHEEL | TURBINE WHEEL | COMPRESSOR COVER | EXHAUST HOUSING | BALL BEARING OPTION AVAILABLE |
|--------------|--------------|---|--|------------------------|-----------------|-------------------------------|
| PTB 605-7168 | 71HPQH | 2.795" (70.99mm) Ind/3.700" (93.98mm) Exd | 3.111" (79.0mm) Ind/2.693" (68.40mm) Exd | H (See Page 21) | Option Group D | Yes |
| PTB 655-7168 | 71HPQHP | 2.795" (70.99mm) Ind/3.700" (93.98mm) Exd | 3.111" (79.0mm) Ind/2.693" (68.40mm) Exd | Ported H (See Page 21) | Option Group D | Yes |

950HP

| PART NUMBER | MODEL NUMBER | COMPRESSOR WHEEL | TURBINE WHEEL | COMPRESSOR COVER | EXHAUST HOUSING | BALL BEARING OPTION AVAILABLE |
|--------------|--------------|---|--|------------------|-----------------|-------------------------------|
| PTB 505-6466 | 6466SP | 2.535" (64.39mm) Ind/3.410" (86.61mm) Exd | 2.920" (74.17mm) Ind/2.600" (66.0mm) Exd | SP (See Page 21) | Option Group C | Yes |

PT6466**PT6766**

"Just started tuning a 6766 CEA on a Grand National and I think the owner got more than he bargained for."
 - Shawn Finley

PRECISION TURBO & ENGINE**985 - 1650 HP Turbochargers**

"PTE is always innovating their products due to great customer service and listening to its customers. Products are A-class both in material and quality. That's why I love PTE and is my first choice on my old school import."
 - Steven Schelmetz

71HPS**985HP**

| PART NUMBER | MODEL NUMBER | COMPRESSOR WHEEL | TURBINE WHEEL | COMPRESSOR COVER | EXHAUST HOUSING | BALL BEARING OPTION AVAILABLE |
|--------------|--------------|--|--|------------------------|------------------|-------------------------------|
| PTB 605-7175 | 71HPSHP | 2.795" (70.99mm) Ind/3.700" (93.98mm) Exd | 3.228" (82mm) Ind/2.956" (75.08mm) Exd | H (See Page 21) | Option Group E | Yes |
| PTB 655-7175 | 71HPSHP | 2.795" (70.99mm) Ind/3.700" (93.98mm) Exd | 3.228" (82mm) Ind/2.956" (75.08mm) Exd | Ported H (See Page 21) | Option Group E | Yes |
| PTB 150-4245 | HP7175 B | 2.795" (70.99mm) Ind/3.700" (93.98mm) Exd | 82mm Turbine Wheel 84 trim | CC2 (See Page 21) | Call for Options | Yes |
| PTB 600-7275 | 72HPSH | 2.864" (72.75mm) Ind/4.030" (102.36mm) Exd | 3.228" (82mm) Ind/2.956" (75.08mm) Exd | H (See Page 21) | Option Group E | Yes |
| PTB 650-7275 | 72HPSHP | 2.864" (72.75mm) Ind/4.030" (102.36mm) Exd | 3.228" (82mm) Ind/2.956" (75.08mm) Exd | Ported H (See Page 21) | Option Group E | Yes |

1060HP

| PART NUMBER | MODEL NUMBER | COMPRESSOR WHEEL | TURBINE WHEEL | COMPRESSOR COVER | EXHAUST HOUSING | BALL BEARING OPTION AVAILABLE |
|--------------|--------------|--|--|------------------------|-----------------|-------------------------------|
| PTB 600-7475 | 74HPSH | 2.941" (74.70mm) Ind/4.030" (102.36mm) Exd | 3.228" (82mm) Ind/2.956" (75.08mm) Exd | H (See Page 21) | Option Group E | Yes |
| PTB 650-7475 | 74HPSHP | 2.941" (74.70mm) Ind/4.030" (102.36mm) Exd | 3.228" (82mm) Ind/2.956" (75.08mm) Exd | Ported H (See Page 21) | Option Group E | Yes |

1170HP

| PART NUMBER | MODEL NUMBER | COMPRESSOR WHEEL | TURBINE WHEEL | COMPRESSOR COVER | EXHAUST HOUSING | BALL BEARING OPTION AVAILABLE |
|--------------|--------------|--|-------------------------------------|------------------|------------------|-------------------------------|
| PTB 700-3000 | PT80H | 3.178" (80.72mm) Ind/4.250" (107.95mm) Exd | Turbine Wheel varies by application | H (See Page 21) | Call for Options | No |

1200HP

| PART NUMBER | MODEL NUMBER | COMPRESSOR WHEEL | TURBINE WHEEL | COMPRESSOR COVER | EXHAUST HOUSING | BALL BEARING OPTION AVAILABLE |
|--------------|--------------|--|--|------------------------|------------------|-------------------------------|
| PTB 605-7675 | 76HPSH | 3.020" (76.71mm) Ind/4.030" (102.36mm) Exd | 3.228" (82mm) Ind/2.956" (75.08mm) Exd | H (See Page 21) | Option Group E | Yes |
| PTB 655-7675 | 76HPSHP | 3.020" (76.71mm) Ind/4.030" (102.36mm) Exd | 3.228" (82mm) Ind/2.956" (75.08mm) Exd | Ported H (See Page 21) | Option Group E | Yes |
| PTB 150-4240 | PT7675 B | 3.020" (76.71mm) Ind/4.030" (102.36mm) Exd | 3.228" (82mm) Ind/2.956" (75.08mm) Exd | CC2 (See Page 21) | Call for Options | Yes |

1225HP

| PART NUMBER | MODEL NUMBER | COMPRESSOR WHEEL | TURBINE WHEEL | COMPRESSOR COVER | EXHAUST HOUSING | BALL BEARING OPTION AVAILABLE |
|--------------|--------------|--|---|------------------|------------------|-------------------------------|
| PTB 700-3029 | PT8047H | 3.182" (80.82mm) Ind/4.252" (108.00mm) Exd | 3.650" (92.71mm) Ind/3.290" (83.56mm) Exd | H (See Page 21) | Call for Options | No |

"Your turbos go on all of my customer cars as well as mine. They allowed me to be consistently quicker and faster than the other cars in my class over the last few years"
 - Jason White



Jason White
 PT71HPQ

1250HP

| PART NUMBER | MODEL NUMBER | COMPRESSOR WHEEL | TURBINE WHEEL | COMPRESSOR COVER | EXHAUST HOUSING | BALL BEARING OPTION AVAILABLE |
|--------------------------------|-----------------|--|--|--------------------------------------|--------------------------------------|-------------------------------|
| PTB 700-7685 B PTB 700-3025 | PT7685 PT88H | 3.020" (76.71mm) Ind/4.030" (102.36mm) Exd 3.420" (86.87mm) Ind/4.268" (108.41mm) Exd | 3.525" (89.54mm) Ind/3.350" (84.70mm) Exd Turbine Wheel varies by application | CC2 (See Page 21) H (See Page 21) | Call for Options Call for Options | No No |

1325HP

| PART NUMBER | MODEL NUMBER | COMPRESSOR WHEEL | TURBINE WHEEL | COMPRESSOR COVER | EXHAUST HOUSING | BALL BEARING OPTION AVAILABLE |
|----------------------------------|------------------|--|--|--------------------------------------|--------------------------------------|-------------------------------|
| PTB 605-8285 B PTB 700-8285 B | PT8285 PT8285 | 3.228" (81.99mm) Ind/4.252" (108.00mm) Exd 3.228" (81.99mm) Ind/4.252" (108.00mm) Exd | 3.525" (89.54mm) Ind/3.350" (84.70mm) Exd 3.525" (89.54mm) Ind/3.350" (84.70mm) Exd | H (See Page 21) CC2 (See Page 21) | Call for Options Call for Options | No Yes |

1350HP

| PART NUMBER | MODEL NUMBER | COMPRESSOR WHEEL | TURBINE WHEEL | COMPRESSOR COVER | EXHAUST HOUSING | BALL BEARING OPTION AVAILABLE |
|--------------|--------------|--|---|-------------------|------------------|-------------------------------|
| PTB 700-8284 | PT8284 | 3.228" (81.99mm) Ind/4.252" (108.00mm) Exd | 3.650" (92.71mm) Ind/3.290" (83.56mm) Exd | CC7 (See Page 21) | Call for Options | Yes |

1400HP

| PART NUMBER | MODEL NUMBER | COMPRESSOR WHEEL | TURBINE WHEEL | COMPRESSOR COVER | EXHAUST HOUSING | BALL BEARING OPTION AVAILABLE |
|--------------|--------------|--------------------|---|------------------|------------------|-------------------------------|
| PTB 700-3027 | PT8847H | 88mm Ind/118mm Exd | 3.650" (92.71mm) Ind/3.290" (83.56mm) Exd | H (See Page 21) | Call for Options | No |

1475HP

| PART NUMBER | MODEL NUMBER | COMPRESSOR WHEEL | TURBINE WHEEL | COMPRESSOR COVER | EXHAUST HOUSING | BALL BEARING OPTION AVAILABLE |
|--------------|--------------|--|---|-------------------|------------------|-------------------------------|
| PTB 700-8884 | PT8884 | 3.462" (87.93mm) Ind/4.765" (121.03mm) Exd | 3.650" (92.71mm) Ind/3.290" (83.56mm) Exd | CC7 (See Page 21) | Call for Options | Yes |

1550HP

| PART NUMBER | MODEL NUMBER | COMPRESSOR WHEEL | TURBINE WHEEL | COMPRESSOR COVER | EXHAUST HOUSING | BALL BEARING OPTION AVAILABLE |
|------------------------------|----------------------|--|---|--|--------------------------------------|-------------------------------|
| PTB 700-8802 PTB 700-5025 | Pro Mod 88 PT91.5 | 3.462" (87.93mm) Ind/4.765" (121.03mm) Exd 3.602" (91.49mm) Ind/5.560" (141.22mm) Exd | 4.391" (111.53mm) Ind/4.02" (102.11mm) Exd F or G Trim Turbine Wheel | CC7 (See Page 21) CCP (See Page 21) | Call for Options Call for Options | Yes Yes |

1650HP

| PART NUMBER | MODEL NUMBER | COMPRESSOR WHEEL | TURBINE WHEEL | COMPRESSOR COVER | EXHAUST HOUSING | BALL BEARING OPTION AVAILABLE |
|--------------|--------------|--|--|-------------------|------------------|-------------------------------|
| PTB 700-9102 | Pro Mod 91 | 3.600" (91.44mm) Ind/4.975" (126.37mm) Exd | 4.391" (111.53mm) Ind/4.02" (102.11mm) Exd | CC7 (See Page 21) | Call for Options | Yes |

76HPS**PT8284****PT7685**

"Products and customer service are second to none!"
- Billy Driscoll

PRECISION TURBO & ENGINE**1750 - 2800 HP Turbochargers**

"Precision gives us the ability to make mind numbing horsepower and offers a product that has great longevity with low maintenance."
- David DeMarco

PRO MOD 94**PT118****1750HP**

| PART NUMBER | MODEL NUMBER | COMPRESSOR WHEEL | TURBINE WHEEL | COMPRESSOR COVER | EXHAUST HOUSING | BALL BEARING OPTION AVAILABLE |
|--------------|--------------|--|---------------------------|-------------------|------------------|-------------------------------|
| PTB 700-5050 | PT94 | 3.700" (93.98mm) Ind/5.560" (141.22mm) Exd | F or G Trim Turbine Wheel | CCP (See Page 21) | Call for Options | Yes |

1825HP

| PART NUMBER | MODEL NUMBER | COMPRESSOR WHEEL | TURBINE WHEEL | COMPRESSOR COVER | EXHAUST HOUSING | BALL BEARING OPTION AVAILABLE |
|--------------|--------------|--|--|-------------------|------------------|-------------------------------|
| PTB 700-9402 | Pro Mod 94 | 3.700" (93.98mm) Ind/4.975" (126.37mm) Exd | 4.391" (111.53mm) Ind/4.02" (102.11mm) Exd | CC7 (See Page 21) | Call for Options | Yes |

1950HP

| PART NUMBER | MODEL NUMBER | COMPRESSOR WHEEL | TURBINE WHEEL | COMPRESSOR COVER | EXHAUST HOUSING | BALL BEARING OPTION AVAILABLE |
|--------------|--------------|--|---------------------------|-------------------|------------------|-------------------------------|
| PTB 700-5100 | PT98 | 3.858" (97.99mm) Ind/5.560" (141.22mm) Exd | F or G Trim Turbine Wheel | CCP (See Page 21) | Call for Options | Yes |

2000HP

| PART NUMBER | MODEL NUMBER | COMPRESSOR WHEEL | TURBINE WHEEL | COMPRESSOR COVER | EXHAUST HOUSING | BALL BEARING OPTION AVAILABLE |
|--------------|--------------|---|--|-------------------|------------------|-------------------------------|
| PTB700-10802 | Pro Mod 108 | 4.232" (107.49mm) Ind/5.486" (139.34mm) Exd | 4.391" (111.53mm) Ind/4.02" (102.11mm) Exd | CC7 (See Page 21) | Call for Options | Yes |

2100HP

| PART NUMBER | MODEL NUMBER | COMPRESSOR WHEEL | TURBINE WHEEL | COMPRESSOR COVER | EXHAUST HOUSING | BALL BEARING OPTION AVAILABLE |
|--------------|--------------|--|---------------------------|-------------------|------------------|-------------------------------|
| PTB 700-5125 | PT101 | 4.000" (101.6mm) Ind/5.560" (141.22mm) Exd | F or G Trim Turbine Wheel | CCP (See Page 21) | Call for Options | Yes |

2400HP

| PART NUMBER | MODEL NUMBER | COMPRESSOR WHEEL | TURBINE WHEEL | COMPRESSOR COVER | EXHAUST HOUSING | BALL BEARING OPTION AVAILABLE |
|--------------|--------------|---|----------------------|-------------------|------------------|-------------------------------|
| PTB 700-5150 | PT106 | 4.160" (105.66mm) Ind/5.560" (141.22mm) Exd | G Trim Turbine Wheel | CCP (See Page 21) | Call for Options | Yes |

2800HP

| PART NUMBER | MODEL NUMBER | COMPRESSOR WHEEL | TURBINE WHEEL | COMPRESSOR COVER | EXHAUST HOUSING | BALL BEARING OPTION AVAILABLE |
|--------------|--------------|---|----------------------|-------------------|------------------|-------------------------------|
| PTB 700-5200 | PT118 | 4.645" (117.98mm) Ind/5.894" (149.71mm) Exd | G Trim Turbine Wheel | CCP (See Page 21) | Call for Options | Yes |

Turbochargers

Since the early 1990s, **Precision Turbo** has supported both the turbo Buick/Pontiac and GMC Syclone/Typhoon platforms with innovative turbochargers for both the street and strip. As we continue to advance our turbocharger technology, we are dedicated to supporting these markets by offering the most technologically advanced products available. Whether you are looking for a stock replacement turbo or an upgraded one to race at the track, our Sales/ Technical Representatives are here to help you choose the best turbocharger for your application.

Give us a call today to discuss your application.



TA6262



Mike Graham

PT67 SY/TY



*"Customer service is the best I've ever had!"
- Mike Graham*

Turbo Buick **"Stock Appearing"** Turbochargers 560HP

| PART NUMBER | MODEL NUMBER | COMPRESSOR WHEEL | TURBINE WHEEL | COMPRESSOR COVER | EXHAUST HOUSING | BALL BEARING OPTION AVAILABLE |
|--------------|--------------|-----------------------|---|-----------------------|-----------------|-------------------------------|
| PTB 105-5558 | TA55 | 2.165" Ind/3.000" Exd | 2.555" (64.90mm) Ind/2.280" (57.91mm) Exd | Buick Stock Appearing | .63 A/R | YES |



610HP

| PART NUMBER | MODEL NUMBER | COMPRESSOR WHEEL | TURBINE WHEEL | COMPRESSOR COVER | EXHAUST HOUSING | BALL BEARING OPTION AVAILABLE |
|--------------|--------------|-----------------------|---|-----------------------|-----------------|-------------------------------|
| PTB 105-5858 | TA58 | 2.285" Ind/3.000" Exd | 2.555" (64.90mm) Ind/2.280" (57.91mm) Exd | Buick Stock Appearing | .63 A/R | YES |



675HP

| PART NUMBER | MODEL NUMBER | COMPRESSOR WHEEL | TURBINE WHEEL | COMPRESSOR COVER | EXHAUST HOUSING | BALL BEARING OPTION AVAILABLE |
|--------------|--------------|-----------------------|--|-----------------------|-----------------|-------------------------------|
| PTB 105-6262 | TA62 | 2.450" Ind/3.228" Exd | 2.795" (71.0mm) Ind/2.437" (61.90mm) Exd | Buick Stock Appearing | .63 and .85 A/R | YES |



695HP

| PART NUMBER | MODEL NUMBER | COMPRESSOR WHEEL | TURBINE WHEEL | COMPRESSOR COVER | EXHAUST HOUSING | BALL BEARING OPTION AVAILABLE |
|--------------|--------------|-----------------------|--|-----------------------|-----------------|-------------------------------|
| PTB 105-6266 | TA62 | 2.450" Ind/3.228" Exd | 2.920" (74.17mm) Ind/2.600" (66.0mm) Exd | Buick Stock Appearing | .63 and .85 A/R | YES |



CLASS LEGAL

Turbochargers


Racing is easy - it's winning that can be the challenge.

Precision Turbo has a longstanding history of building turbochargers that win and we know what it takes to put together the perfect unit to boost you ahead of the competition. Success doesn't come from a standard off-the-shelf turbocharger; it comes from years of dedicated research, development, real-world racing experience and collaboration with sanctioning bodies to develop the best turbos on the market, period. Our customers have won championships and set records in practically every racing sanctioning body in existence and we're committed to helping you build the quickest and fastest race cars possible.



Eric Dillard

NSCRA Sport Front Wheel Drive Turbocharger 1400HP

| PART NUMBER | MODEL NUMBER | COMPRESSOR WHEEL | TURBINE WHEEL | COMPRESSOR COVER | EXHAUST HOUSING | BALL BEARING OPTION AVAILABLE |
|----------------|--------------|---|---|-------------------|------------------|---|
| PTB 700-7285 B | PT7285 | 2.82" (71.63mm) Ind/4.030" (102.36mm) Exd | 3.525" (89.54mm) Ind/3.350" (84.70mm) Exd | CC2 (See Page 21) | Call for Options | Yes  |

NMRA Xtreme Drag Radial Turbocharger 1400HP

| PART NUMBER | MODEL NUMBER | COMPRESSOR WHEEL | TURBINE WHEEL | COMPRESSOR COVER | EXHAUST HOUSING | BALL BEARING OPTION AVAILABLE |
|--------------|--------------|--|---------------------------|-------------------|------------------|---|
| PTB 705-5505 | PT85 | 3.344" (84.94mm) Ind/5.560" (141.30mm) Exd | F or G Trim Turbine Wheel | CCP (See Page 21) | Call for Options | Yes  |

X275 88mm Turbocharger 1600HP

| PART NUMBER | MODEL NUMBER | COMPRESSOR WHEEL | TURBINE WHEEL | COMPRESSOR COVER | EXHAUST HOUSING | BALL BEARING OPTION AVAILABLE |
|--------------|--------------|--|---------------------------|-------------------|------------------|---|
| PTB 705-5500 | X275 88 | 3.462" (87.93mm) Ind/5.560" (141.30mm) Exd | F or G Trim Turbine Wheel | CCP (See Page 21) | Call for Options | Yes  |

NMRA Super Street Outlaw Turbocharger 1950HP

| PART NUMBER | MODEL NUMBER | COMPRESSOR WHEEL | TURBINE WHEEL | COMPRESSOR COVER | EXHAUST HOUSING | BALL BEARING OPTION AVAILABLE |
|--------------|--------------|---|---------------------------|-------------------|------------------|---|
| PTB 700-5100 | PT98 | 3.856" (97.94mm) Ind/5.560" 141.30mm) Exd | F or G Trim Turbine Wheel | CCP (See Page 21) | Call for Options | Yes  |



Bruno Massel



X275 88



PT7285

"Precision ranks in the upper echelon of customer service and product quality."
- Reid Kusano

ENTRY LEVEL

355 - 565 HP Turbochargers

Trying to put together a cost effective turbocharger system for your vehicle?

We have just what you are looking for. **Precision Turbo's** line of Entry Level Turbochargers provides the perfect solution delivering a high quality product for those on a budget. With several units to choose from, as well as numerous turbine housing options, **Precision Turbo** has you covered!



355HP

| PART NUMBER | MODEL NUMBER | COMPRESSOR WHEEL | TURBINE WHEEL | COMPRESSOR COVER | EXHAUST HOUSING | BALL BEARING OPTION AVAILABLE |
|--------------|--------------|--|---|------------------|------------------|-------------------------------|
| PTB 002-4854 | 4854B | 1.904" (49.27mm) Ind/2.755" (70mm) Exd | 2.556" (64.92mm) Ind/2.124" (53.94mm) Exd | B (See Page 21) | Call for Options | No |

375HP

| PART NUMBER | MODEL NUMBER | COMPRESSOR WHEEL | TURBINE WHEEL | COMPRESSOR COVER | EXHAUST HOUSING | BALL BEARING OPTION AVAILABLE |
|--------------|--------------|--|--|------------------|------------------|-------------------------------|
| PTB 002-4831 | 4831B | 1.904" (49.27mm) Ind/2.755" (70mm) Exd | 2.559" (65mm) Ind/2.228" (56.59mm) Exd | B (See Page 21) | Call for Options | No |

470HP

| PART NUMBER | MODEL NUMBER | COMPRESSOR WHEEL | TURBINE WHEEL | COMPRESSOR COVER | EXHAUST HOUSING | BALL BEARING OPTION AVAILABLE |
|--------------|--------------|---|---|------------------|------------------|-------------------------------|
| PTB 003-3254 | 3254E | 2.170" (55.12mm) Ind/2.950" (74.93mm) Exd | 2.556" (64.92mm) Ind/2.124" (53.94mm) Exd | E (See Page 21) | Call for Options | No |

490HP

| PART NUMBER | MODEL NUMBER | COMPRESSOR WHEEL | TURBINE WHEEL | COMPRESSOR COVER | EXHAUST HOUSING | BALL BEARING OPTION AVAILABLE |
|--------------|--------------|---|--|------------------|------------------|-------------------------------|
| PTB 003-3231 | 3231E | 2.170" (55.12mm) Ind/2.950" (74.93mm) Exd | 2.559" (65mm) Ind/2.228" (56.59mm) Exd | E (See Page 21) | Call for Options | No |

495HP

| PART NUMBER | MODEL NUMBER | COMPRESSOR WHEEL | TURBINE WHEEL | COMPRESSOR COVER | EXHAUST HOUSING | BALL BEARING OPTION AVAILABLE |
|--------------|--------------|---|---|------------------|------------------|-------------------------------|
| PTB 003-5454 | 5454E | 2.123" (53.92mm) Ind/2.950" (74.93mm) Exd | 2.556" (64.92mm) Ind/2.124" (53.94mm) Exd | E (See Page 21) | Call for Options | No |

500HP

| PART NUMBER | MODEL NUMBER | COMPRESSOR WHEEL | TURBINE WHEEL | COMPRESSOR COVER | EXHAUST HOUSING | BALL BEARING OPTION AVAILABLE |
|--------------|--------------|---|--|------------------|------------------|-------------------------------|
| PTB 003-5431 | 5431E | 2.123" (53.92mm) Ind/2.950" (74.93mm) Exd | 2.559" (65mm) Ind/2.228" (56.59mm) Exd | E (See Page 21) | Call for Options | No |

545HP

| PART NUMBER | MODEL NUMBER | COMPRESSOR WHEEL | TURBINE WHEEL | COMPRESSOR COVER | EXHAUST HOUSING | BALL BEARING OPTION AVAILABLE |
|--------------|--------------|---|--|------------------|------------------|-------------------------------|
| PTB 003-3431 | 3431E | 2.230" (56.64mm) Ind/2.950" (74.93mm) Exd | 2.559" (65mm) Ind/2.228" (56.59mm) Exd | E (See Page 21) | Call for Options | No |

565HP

| PART NUMBER | MODEL NUMBER | COMPRESSOR WHEEL | TURBINE WHEEL | COMPRESSOR COVER | EXHAUST HOUSING | BALL BEARING OPTION AVAILABLE |
|--------------|--------------|---|--|------------------------------|------------------|-------------------------------|
| PTB 003-4431 | 4431E | 2.290" (58.16mm) Ind/2.950" (74.93mm) Exd | 2.559" (65mm) Ind/2.228" (56.59mm) Exd | E (See Page 21) | Call for Options | No |
| PTB 001-6031 | TA60 | 2.320" (58.92mm) Ind/3.00" (76.2mm) Exd | 2.559" (65mm) Ind/2.228" (56.59mm) Exd | Buick Specific (See Page 21) | Call for Options | No |

ENTRY LEVEL**590 - 1000 HP Turbochargers****6665H****7668S****590HP**

| PART NUMBER | MODEL NUMBER | COMPRESSOR WHEEL | TURBINE WHEEL | COMPRESSOR COVER | EXHAUST HOUSING | BALL BEARING OPTION AVAILABLE |
|--------------|--------------|---|--|------------------------------|------------------|-------------------------------|
| PTB 001-5252 | TA52 | 2.320" (58.92mm) Ind/3.00" (76.2mm) Exd | 2.795" (71mm) Ind/2.437" (61.89mm) Exd | Buick Specific (See Page 21) | Call for Options | No |
| PTB 003-6031 | 6031E | 2.320" (58.92mm) Ind/3.00" (76.2mm) Exd | 2.559" (65mm) Ind/2.228" (56.59mm) Exd | E (See Page 21) | Call for Options | No |

600HP

| PART NUMBER | MODEL NUMBER | COMPRESSOR WHEEL | TURBINE WHEEL | COMPRESSOR COVER | EXHAUST HOUSING | BALL BEARING OPTION AVAILABLE |
|--------------|--------------|---|--|------------------|------------------|-------------------------------|
| PTB 003-5252 | 5252E | 2.320" (58.92mm) Ind/3.00" (76.2mm) Exd | 2.795" (71mm) Ind/2.437" (61.89mm) Exd | E (See Page 21) | Call for Options | No |

605HP

| PART NUMBER | MODEL NUMBER | COMPRESSOR WHEEL | TURBINE WHEEL | COMPRESSOR COVER | EXHAUST HOUSING | BALL BEARING OPTION AVAILABLE |
|--------------|--------------|---|---|------------------------------|------------------|-------------------------------|
| PTB 001-6069 | TA54 | 2.320" (58.92mm) Ind/3.00" (76.2mm) Exd | 2.920" (74.17mm) Ind/2.420" (61.46mm) Exd | Buick Specific (See Page 21) | Call for Options | No |
| PTB 003-6069 | 6069E | 2.320" (58.92mm) Ind/3.00" (76.2mm) Exd | 2.920" (74.17mm) Ind/2.420" (61.46mm) Exd | E (See Page 21) | Call for Options | No |

610HP

| PART NUMBER | MODEL NUMBER | COMPRESSOR WHEEL | TURBINE WHEEL | COMPRESSOR COVER | EXHAUST HOUSING | BALL BEARING OPTION AVAILABLE |
|--------------|--------------|---|---|------------------|------------------|-------------------------------|
| PTB 003-6076 | 6076E | 2.320" (58.92mm) Ind/3.00" (76.2mm) Exd | 2.920" (74.17mm) Ind/2.542" (64.56mm) Exd | E (See Page 21) | Call for Options | No |

655HP

| PART NUMBER | MODEL NUMBER | COMPRESSOR WHEEL | TURBINE WHEEL | COMPRESSOR COVER | EXHAUST HOUSING | BALL BEARING OPTION AVAILABLE |
|--------------|--------------|---|--|------------------|------------------|-------------------------------|
| PTB 003-6152 | 6152E | 2.416" (61.37mm) Ind/3.227" (81.97mm) Exd | 2.795" (71mm) Ind/2.437" (61.89mm) Exd | E (See Page 21) | Call for Options | No |

695HP

| PART NUMBER | MODEL NUMBER | COMPRESSOR WHEEL | TURBINE WHEEL | COMPRESSOR COVER | EXHAUST HOUSING | BALL BEARING OPTION AVAILABLE |
|--------------|--------------|---|---|------------------|------------------|-------------------------------|
| PTB 003-6176 | 6176E | 2.416" (61.37mm) Ind/3.227" (81.97mm) Exd | 2.920" (74.17mm) Ind/2.542" (64.56mm) Exd | E (See Page 21) | Call for Options | No |
| PTB 003-6365 | 6365E | 2.475" (62.86mm) Ind/3.30" (83.82mm) Exd | 2.920" (74.17mm) Ind/2.542" (64.56mm) Exd | E (See Page 21) | Call for Options | No |
| PTB 006-636 | 6365H | 2.475" (62.86mm) Ind/3.30" (83.82mm) Exd | 2.920" (74.17mm) Ind/2.542" (64.56mm) Exd | H (See Page 21) | Call for Options | No |

700HP

| PART NUMBER | MODEL NUMBER | COMPRESSOR WHEEL | TURBINE WHEEL | COMPRESSOR COVER | EXHAUST HOUSING | BALL BEARING OPTION AVAILABLE |
|--------------|--------------|---|---|------------------|------------------|-------------------------------|
| PTB 003-6665 | 6665E | 2.580" (65.53mm) Ind/3.580" (90.93mm) Exd | 2.920" (74.17mm) Ind/2.542" (64.56mm) Exd | E (See Page 21) | Call for Options | No |
| PTB 006-6665 | 6665H | 2.580" (65.53mm) Ind/3.580" (90.93mm) Exd | 2.920" (74.17mm) Ind/2.542" (64.56mm) Exd | H (See Page 21) | Call for Options | No |

720HP

| PART NUMBER | MODEL NUMBER | COMPRESSOR WHEEL | TURBINE WHEEL | COMPRESSOR COVER | EXHAUST HOUSING | BALL BEARING OPTION AVAILABLE |
|--------------|--------------|---|--|------------------|------------------|-------------------------------|
| PTB 003-6668 | 6668E | 2.580" (65.53mm) Ind/3.580" (90.93mm) Exd | 3.111" (79mm) Ind/2.693" (68.40mm) Exd | E (See Page 21) | Call for Options | No |
| PTB 006-6668 | 6668H | 2.580" (65.53mm) Ind/3.580" (90.93mm) Exd | 3.111" (79mm) Ind/2.693" (68.40mm) Exd | H (See Page 21) | Call for Options | No |

775HP

| PART NUMBER | MODEL NUMBER | COMPRESSOR WHEEL | TURBINE WHEEL | COMPRESSOR COVER | EXHAUST HOUSING | BALL BEARING OPTION AVAILABLE |
|--------------|--------------|---|---|------------------|------------------|-------------------------------|
| PTB 003-6776 | 6776E | 2.620" (66.55mm) Ind/3.310" (84.07mm) Exd | 2.920" (74.17mm) Ind/2.542" (64.56mm) Exd | E (See Page 21) | Call for Options | No |
| PTB 003-6865 | 6865E | 2.680" (68.07mm) Ind/3.580" (90.93mm) Exd | 2.920" (74.17mm) Ind/2.542" (64.56mm) Exd | E (See Page 21) | Call for Options | No |
| PTB 006-6865 | 6865H | 2.680" (68.07mm) Ind/3.580" (90.93mm) Exd | 2.920" (74.17mm) Ind/2.542" (64.56mm) Exd | H (See Page 21) | Call for Options | No |

800HP

| PART NUMBER | MODEL NUMBER | COMPRESSOR WHEEL | TURBINE WHEEL | COMPRESSOR COVER | EXHAUST HOUSING | BALL BEARING OPTION AVAILABLE |
|--------------|--------------|---|--|------------------|------------------|-------------------------------|
| PTB 003-6868 | 6868E | 2.680" (68.07mm) Ind/3.580" (90.93mm) Exd | 3.111" (79mm) Ind/2.693" (68.40mm) Exd | E (See Page 21) | Call for Options | No |
| PTB 006-6868 | 6868H | 2.680" (68.07mm) Ind/3.580" (90.93mm) Exd | 3.111" (79mm) Ind/2.693" (68.40mm) Exd | H (See Page 21) | Call for Options | No |

820HP

| PART NUMBER | MODEL NUMBER | COMPRESSOR WHEEL | TURBINE WHEEL | COMPRESSOR COVER | EXHAUST HOUSING | BALL BEARING OPTION AVAILABLE |
|--------------|--------------|---|---|------------------|------------------|-------------------------------|
| PTB 006-7065 | 7065H | 2.722" (69.13mm) Ind/3.852" (97.84mm) Exd | 2.920" (74.17mm) Ind/2.542" (64.56mm) Exd | H (See Page 21) | Call for Options | No |

850HP

| PART NUMBER | MODEL NUMBER | COMPRESSOR WHEEL | TURBINE WHEEL | COMPRESSOR COVER | EXHAUST HOUSING | BALL BEARING OPTION AVAILABLE |
|--------------|--------------|---|--|--------------------|------------------|-------------------------------|
| PTB 006-7068 | 7068H | 2.722" (69.13mm) Ind/3.852" (97.84mm) Exd | 3.111" (79mm) Ind/2.693" (68.40mm) Exd | H (See Page 21) | Call for Options | No |
| PTB 150-4200 | GT4294 | 2.767" (70.28mm) Ind/3.700" (93.98mm) Exd | 3.228" (82mm) Ind/2.958" (75.13mm) Exd | GT42 (See Page 21) | Call for Options | No |

900HP

| PART NUMBER | MODEL NUMBER | COMPRESSOR WHEEL | TURBINE WHEEL | COMPRESSOR COVER | EXHAUST HOUSING | BALL BEARING OPTION AVAILABLE |
|--------------|--------------|--|--|------------------|------------------|-------------------------------|
| PTB 006-7268 | 7268H | 2.850" (72.39mm) Ind/4.030" (102.36mm) Exd | 3.111" (79mm) Ind/2.693" (68.40mm) Exd | H (See Page 21) | Call for Options | No |

950HP

| PART NUMBER | MODEL NUMBER | COMPRESSOR WHEEL | TURBINE WHEEL | COMPRESSOR COVER | EXHAUST HOUSING | BALL BEARING OPTION AVAILABLE |
|--------------|--------------|--|--|------------------|------------------|-------------------------------|
| PTB 004-7668 | 7668S | 3.007" (76.37mm) Ind/4.031" (102.39mm) Exd | 3.111" (79mm) Ind/2.693" (68.40mm) Exd | S (See Page 21) | Call for Options | No |

1000HP

| PART NUMBER | MODEL NUMBER | COMPRESSOR WHEEL | TURBINE WHEEL | COMPRESSOR COVER | EXHAUST HOUSING | BALL BEARING OPTION AVAILABLE |
|--------------|--------------|--|--|--------------------|------------------|-------------------------------|
| PTB 150-4210 | GT4202 | 2.925" (74.29mm) Ind/4.027" (102.28mm) Exd | 3.228" (82mm) Ind/2.958" (75.13mm) Exd | GT42 (See Page 21) | Call for Options | No |

DIRECT REPLACEMENT**Turbochargers**

Precision Turbo is proud to introduce our line of direct-fit upgrade replacement Turbochargers with our unique CEA (Competition Engineered Aerodynamics) 2618 forged aluminum compressor wheels. These turbochargers are specifically designed to out-perform turbos of the same size from other suppliers, while delivering greater efficiency and less turbo lag. All direct fit replacement turbochargers feature a liquid-cooled, dual ceramic ball bearing CHRA for maximum performance, and are available in various compressor cover and turbine housing options to ensure a direct fit.

**PT4828****PT6235****340HP**

| PART NUMBER | MODEL NUMBER | COMPRESSOR WHEEL | TURBINE WHEEL | EXHAUST HOUSING | BALL BEARING OPTION AVAILABLE |
|---------------|--------------|-------------------------|------------------------------|------------------|-------------------------------|
| PTB 205-4828B | PT4828 | 1.890" Ind / 2.366" Exd | 53.8mm Turbine Wheel 76 Trim | Call for Options | Yes |
| PTB 225-4828B | PT4828 | 1.890" Ind / 2.366" Exd | 53.8mm Turbine Wheel 76 Trim | Call for Options | Yes |

**450HP**

| PART NUMBER | MODEL NUMBER | COMPRESSOR WHEEL | TURBINE WHEEL | EXHAUST HOUSING | BALL BEARING OPTION AVAILABLE |
|---------------|--------------|-------------------------|------------------------------|------------------|-------------------------------|
| PTB 205-5128B | PT5128 | 1.890" Ind / 2.366" Exd | 53.8mm Turbine Wheel 76 Trim | Call for Options | Yes |
| PTB 225-5128B | PT5128 | 1.890" Ind / 2.366" Exd | 53.8mm Turbine Wheel 76 Trim | Call for Options | Yes |
| PTB 305-5558B | PT5128 | 1.890" Ind / 2.366" Exd | 53.8mm Turbine Wheel 76 Trim | Call for Options | Yes |

**450HP**

| PART NUMBER | MODEL NUMBER | COMPRESSOR WHEEL | TURBINE WHEEL | EXHAUST HOUSING | BALL BEARING OPTION AVAILABLE |
|---------------|--------------|-------------------------|------------------------------|------------------|-------------------------------|
| PTB 205-5130B | PT5130 | 1.890" Ind / 2.366" Exd | 56.5mm Turbine Wheel 84 Trim | Call for Options | Yes |
| PTB 225-5130B | PT5130 | 1.890" Ind / 2.366" Exd | 56.5mm Turbine Wheel 84 Trim | Call for Options | Yes |
| PTB 305-5130B | PT5130 | 1.890" Ind / 2.366" Exd | 56.5mm Turbine Wheel 84 Trim | Call for Options | Yes |

**510HP**

| PART NUMBER | MODEL NUMBER | COMPRESSOR WHEEL | TURBINE WHEEL | EXHAUST HOUSING | BALL BEARING OPTION AVAILABLE |
|---------------|--------------|-------------------------|------------------------------|------------------|-------------------------------|
| PTB 205-5530B | PT5530 | 1.890" Ind / 2.366" Exd | 56.5mm Turbine Wheel 84 Trim | Call for Options | Yes |
| PTB 305-5530B | PT5530 | 1.890" Ind / 2.366" Exd | 56.5mm Turbine Wheel 84 Trim | Call for Options | Yes |
| PTB 405-5530B | PT5530 | 1.890" Ind / 2.366" Exd | 56.5mm Turbine Wheel 84 Trim | Call for Options | Yes |
| PTB 505-5530B | PT5530 | 1.890" Ind / 2.366" Exd | 56.5mm Turbine Wheel 84 Trim | Call for Options | Yes |

**580HP**

| PART NUMBER | MODEL NUMBER | COMPRESSOR WHEEL | TURBINE WHEEL | EXHAUST HOUSING | BALL BEARING OPTION AVAILABLE |
|---------------|--------------|-------------------------|------------------------------|------------------|-------------------------------|
| PTB 205-5830B | PT5830 | 1.890" Ind / 2.366" Exd | 53.5mm Turbine Wheel 84 Trim | Call for Options | Yes |
| PTB 305-5830B | PT5830 | 1.890" Ind / 2.366" Exd | 53.5mm Turbine Wheel 84 Trim | Call for Options | Yes |
| PTB 405-5830B | PT5830 | 1.890" Ind / 2.366" Exd | 53.5mm Turbine Wheel 84 Trim | Call for Options | Yes |

**680HP**

| PART NUMBER | MODEL NUMBER | COMPRESSOR WHEEL | TURBINE WHEEL | EXHAUST HOUSING | BALL BEARING OPTION AVAILABLE |
|---------------|--------------|-------------------------|----------------------------|------------------|-------------------------------|
| PTB 205-6235B | PT6235 | 1.890" Ind / 2.366" Exd | 68mm Turbine Wheel 84 Trim | Call for Options | Yes |
| PTB 305-6235B | PT6235 | 1.890" Ind / 2.366" Exd | 68mm Turbine Wheel 84 Trim | Call for Options | Yes |
| PTB 405-6235B | PT6235 | 1.890" Ind / 2.366" Exd | 68mm Turbine Wheel 84 Trim | Call for Options | Yes |
| PTB 505-6235B | PT6235 | 1.890" Ind / 2.366" Exd | 68mm Turbine Wheel 84 Trim | Call for Options | Yes |



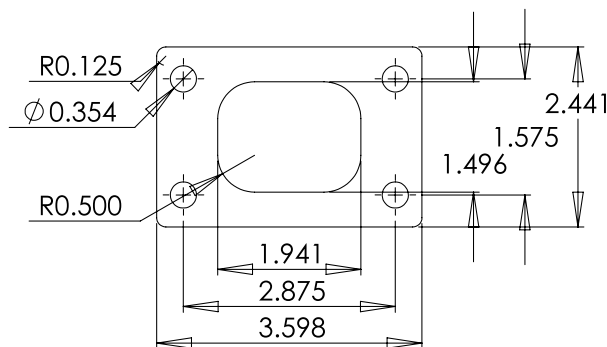
Options

There's more to finding the right turbo than just picking the horsepower that you want to make. Proper selection takes into account a variety of different factors in order to get you the best turbo for your project and choosing the right compressor cover and turbine housing is a big part of the equation. **Precision Turbo** is well known for having one of the widest selections of housings for both sides of the turbocharger to ensure great fit and performance.

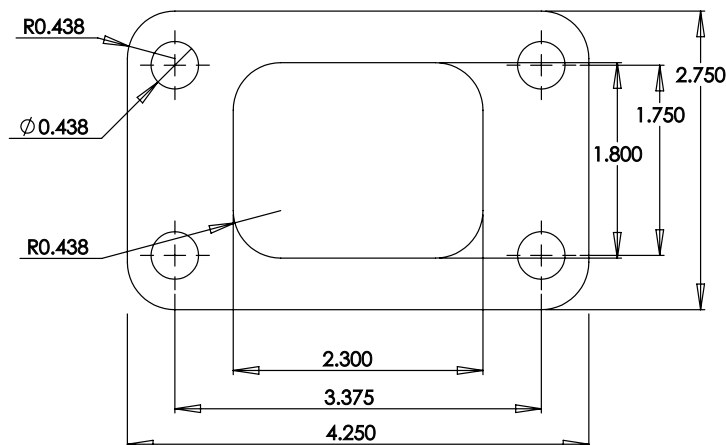
Precision Turbo offers turbochargers with T25, T3, T4, T5, and V-band exhaust inlets.

T3 inlet exhaust housings come with your choice of 4-bolt, 5-bolt, or V-band outlets in various A/R's. Precision Turbo's T4 housings utilize a V-band outlet connection.

Precision Turbo offers a variety of T4 housings in tangential style castings (both divided and undivided) with various A/R's available along with on-center designs in .69 and .85 A/R scrolls to fit a wide range of applications.



T25 Inlet



T3 Inlet

Turbine Housing Key

Turbine Hsg Option Group A CEA58

| STYLE | A/R's |
|---------------------|---------------------|
| MITSU | .48, .63 (W, WD, N) |
| BUICK | .63 |
| GMC Cyclone/Typhoon | .85 |
| T3-5BOLT | .48, .63 (W) |
| T3-4BOLT | .48, .63, .82 |
| T3-V-BAND | .63, .82 |
| V-BAND IN/OUT | .64, .82 |
| T4-V-BAND | .58 |

Turbine Hsg Option Group B CEA62

| STYLE | A/R's |
|---------------------|----------------|
| MITSU | .63 (W, WD, N) |
| BUICK | .63, .85 |
| GMC Cyclone/Typhoon | .85 |
| T3-5BOLT | .63 (W) |
| T3-4BOLT | .63, .82 |
| T3-V-BAND | .63, .82 |
| V-BAND IN/OUT | .64, .82 |
| T4-V-BAND | .58, .68 |
| T4 V-BAND DIVIDED | .84 |

Turbine Hsg Option Group C CEA66

| STYLE | A/R's |
|---------------------|----------------------|
| MITSU | N/A |
| BUICK | .63, .85 |
| GMC Cyclone/Typhoon | .85 |
| T3-5BOLT | .63 (W) |
| T3-4BOLT | .63, .82 |
| T3-V-BAND | .63, .82 |
| V-BAND IN/OUT | .82 |
| T4-V-BAND | .58, .68, .81, .96 |
| T4 V-BAND DIVIDED | .84, 1.0, 1.15, 1.32 |

Turbine Hsg Option Group D HPQ

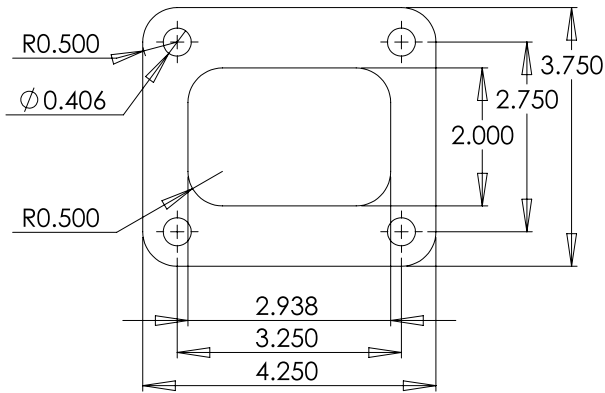
| STYLE | A/R's |
|---------------------|--------------------|
| MITSU | N/A |
| BUICK | .63, .85 |
| GMC Cyclone/Typhoon | .85 |
| T3-5BOLT | N/A |
| T3-4BOLT | N/A |
| T3-V-BAND | N/A |
| T4-V-BAND | .58, .68, .81, .96 |

Turbine Hsg Option Group E HPS

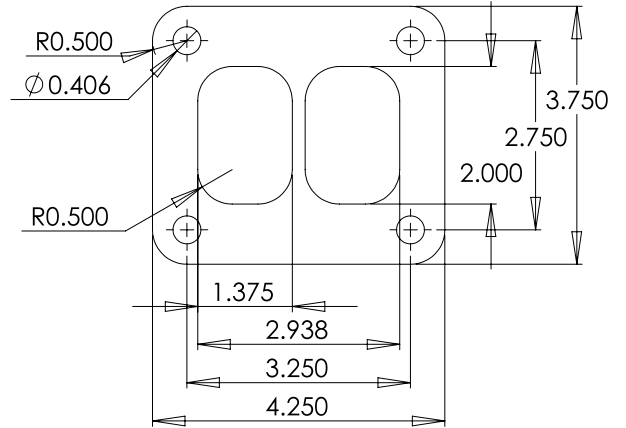
| STYLE | A/R's |
|---------------------|----------|
| MITSU | N/A |
| BUICK | N/A |
| GMC Cyclone/Typhoon | N/A |
| T3-5BOLT | N/A |
| T3-4BOLT | N/A |
| T3-V-BAND | N/A |
| T4-V-BAND | .81, .96 |

TURBINE HOUSING

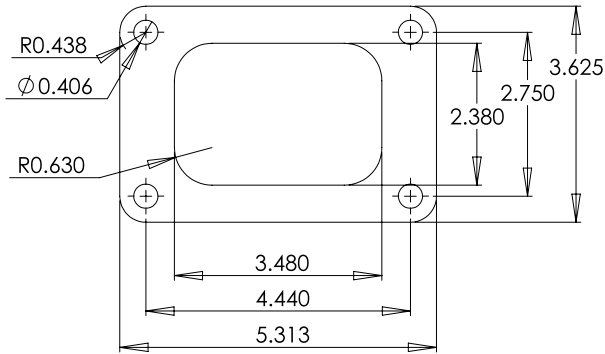
Technical Information



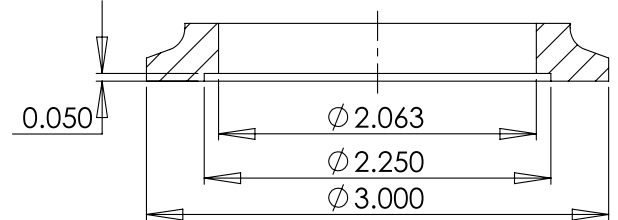
T4 Inlet



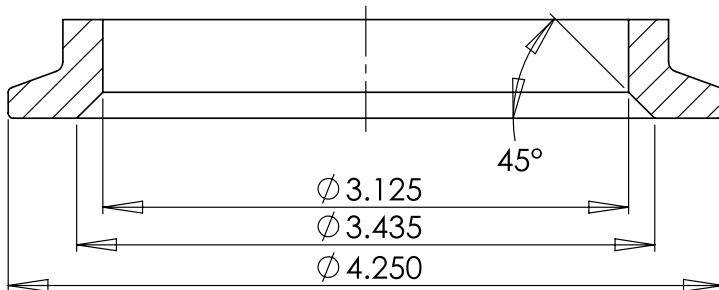
T4 Divided Inlet



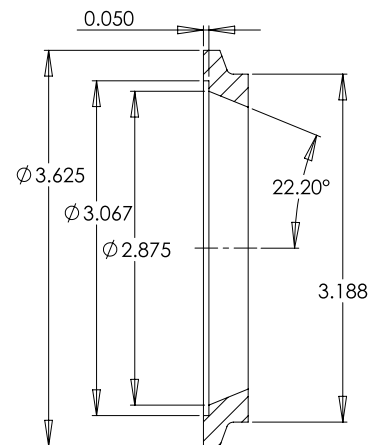
T5 Inlet



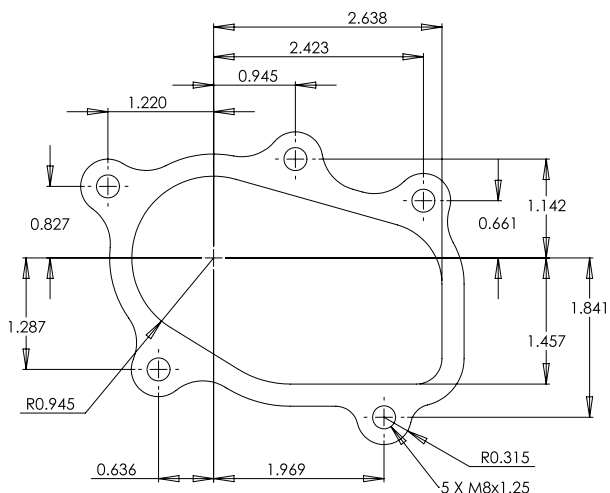
THV Inlet



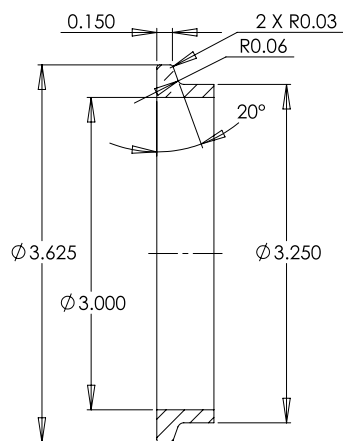
PRO MOD Inlet



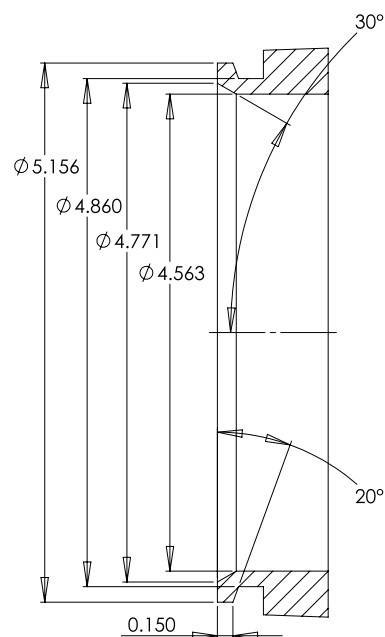
THV Outlet



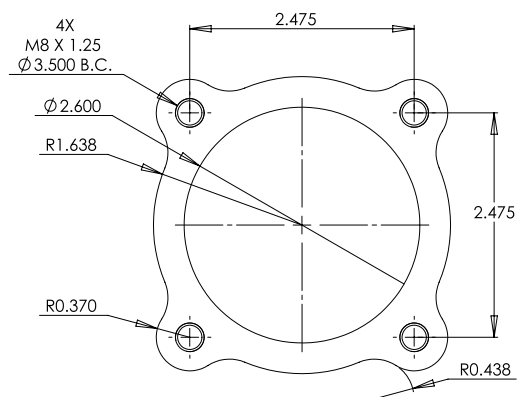
T25 Discharge



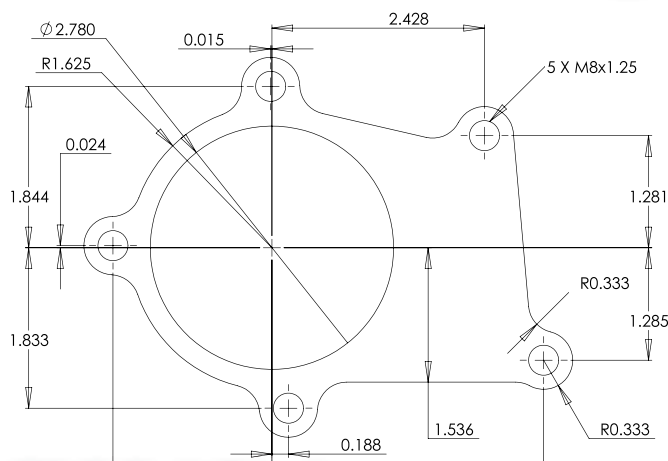
T4 Discharge



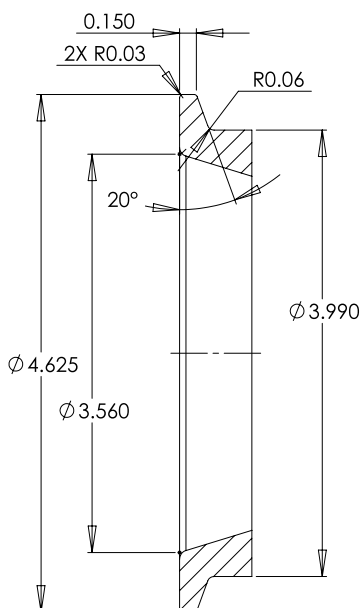
T5 Discharge



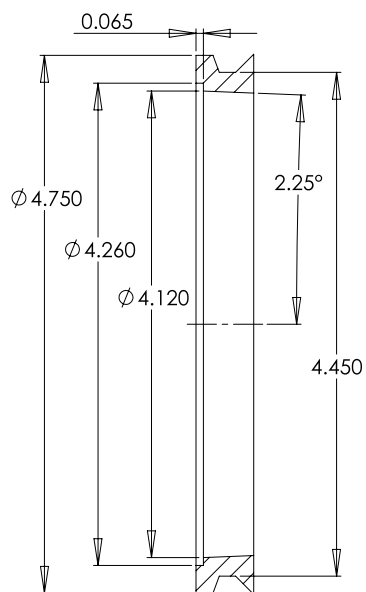
T3 4-Bolt Discharge



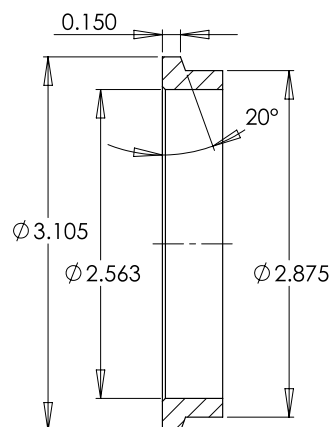
T3 5-Bolt Discharge



GT42 Discharge



PRO MOD Discharge



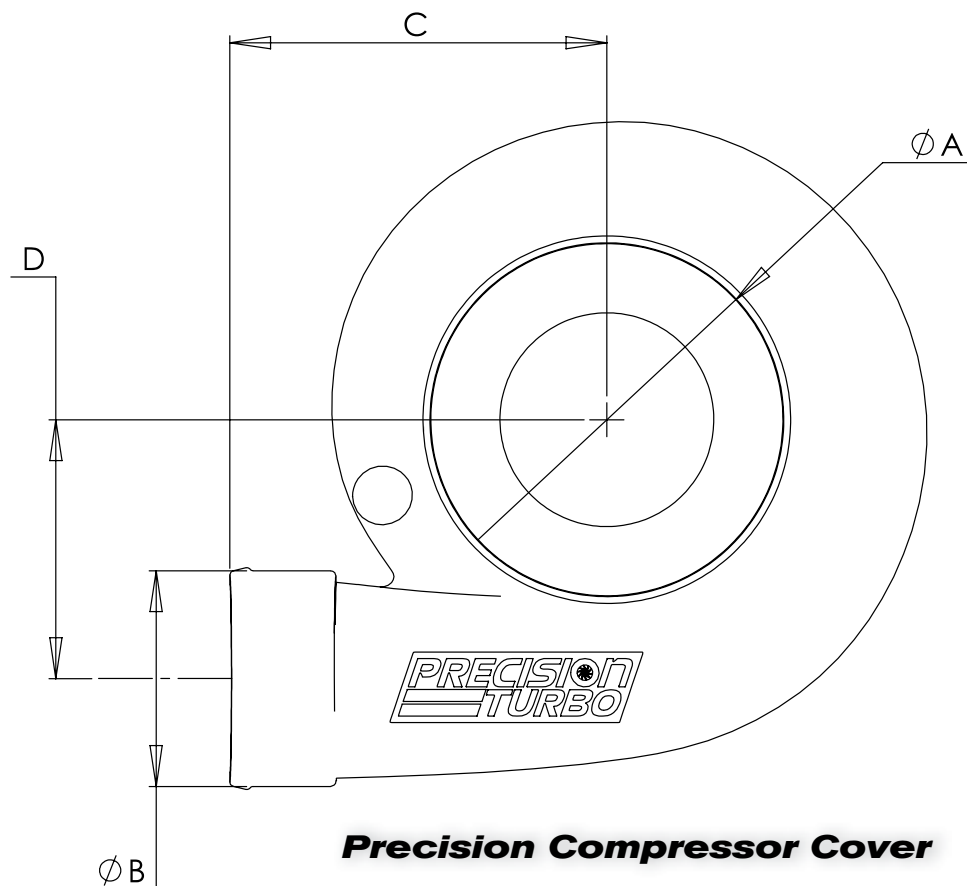
SECTION A-A
SCALE 1 : 1

THGT V-Band Discharge

PRECISION TURBO & ENGINE

Compressor Covers

Precision Turbo offers a variety of compressor covers with different inlet/outlet configurations for most turbochargers. Ported shroud compressor covers are available on larger model turbo-chargers to help alleviate compressor surge. If you need further information, please contact one of our Sales/Technical Representatives.

**Precision Compressor Cover**

| COMP. HSG. | COMPRESSOR HOUSING DIMENSIONS | | | | PORTED SHROUD AVAILABLE |
|------------|-------------------------------|------------|------|------|-------------------------|
| | Ø A INLET | Ø B OUTLET | C | D | |
| CCB____ | 2.8 | 2.0 | 4.25 | 2.25 | NO |
| CCE____ | 3.0 | 2.0 | 4.35 | 2.25 | NO |
| CCS____ | 4.0 | 2.5 | 4.35 | 3.00 | YES |
| CCH____ | 4.0 | 3.0 | 5.45 | 3.10 | YES |
| CC2____ | 5.0 | 4.2 V-BAND | 4.85 | 4.25 | YES |
| CC7____ | 5.0 | 4.2 V-BAND | 4.80 | 4.95 | YES |
| CC7____S | 5.0 | 4.0 | 5.50 | 4.95 | YES |
| CCP____ | 7.0 | 4.0 | 5.75 | 5.45 | YES* |

*Only available on specific models.

Accessories

Clamps

| PART NUMBER | SIZE | STYLE |
|-------------|-----------------------------------|--------------|
| PTP071-1005 | 2.00" - 2.50" | T-bolt clamp |
| PTP071-1008 | 2.25" - 2.75" | T-bolt clamp |
| PTP071-1011 | 2.50" - 3.00" | T-bolt clamp |
| PTP071-1012 | 2.50" - 2.75" | T-bolt clamp |
| PTP071-1014 | 2.75" - 3.25" | T-bolt clamp |
| PTP071-1017 | 3.00" - 3.50" | T-bolt clamp |
| PTP071-1020 | 3.25" - 3.75" | T-bolt clamp |
| PTP071-1021 | 3.88" - 4.19" | T-bolt clamp |
| PTP071-1023 | 4.00" | T-bolt clamp |
| PTP071-1026 | 3.00" | V-band clamp |
| PTP071-1029 | 3 5/8" | V-band clamp |
| PTP071-1032 | 4 1/2" | V-band clamp |
| PTP071-1035 | 5 1/4" | V-band clamp |
| PTP071-1038 | GT42 Turbine discharge flange | V-band clamp |
| PTP071-1041 | GT42 Comp discharge flange | V-band clamp |
| PTP071-1043 | 3 1/2" - 3 5/8" | V-band clamp |
| PTP071-1061 | Pro Mod Turbine Housing Inlet | V-band clamp |
| PTP071-1064 | Pro Mod Turbine Housing Discharge | V-band clamp |

Flanges

| PART NUMBER (INLET) | DESCRIPTION |
|-------------------------|---|
| PTP074-1008 | T3 Inlet Flange (SS) |
| PTP074-1011 | T4 Inlet Flange (MS) |
| PTP074-1014 | Large Frame Inlet Flange (MS) |
| PTP074-1017 | Buick 3 Bolt to T4 Bolt adapter (MS) |
| PTP074-1030 | T3 V-band Inlet Flange (SS) |
| PTP074-1050 | Pro Mod V-band Inlet Flange (SS) |
| PART NUMBER (DISCHARGE) | DESCRIPTION |
| PTP074-3002 | T25 Exhaust Discharge Weld Flange (MS) |
| PTP074-3050 | V-Band Discharge Flange f/PTE Housings (SS) |
| PTP074-3005 | 4 Bolt Discharge Weld Flange (MS) |
| PTP074-3008 | 5 Bolt Discharge Weld Flange (SS) |
| PTP074-3010 | GT30R/GT35R4 Bolt Discharge Weld Flange (SS) |
| PTP074-3012 | 3" V-Band Discharge Weld Flange (SS) |
| PTP074-3014 | 3 5/8" Steel Weld Tube for Downpipe (MS) |
| PTP074-3036 | 3 5/8" Weld Flange for 3" or 3.5" DP (SS) |
| PTP074-3020 | 4" On-Center Weld Flange (MS) |
| PTP074-3026 | 4" V-Band Discharge Weld Flange (MS) |
| PTP074-3029 | 5" V-Band Discharge Weld Flange (MS) |
| PTP074-3042 | Comp. Discharge Flange for GT42/45/47/55 |
| PTP074-3044 | Comp. Discharge Flange for GT42/45/47/55 (MS) |
| PTP074-3045 | Turbine Outlet Flange for GT42 (SS) |
| PTP074-3046 | Turbine Outlet Flange for GT42 (ALUM) |
| PTP074-3050 | T3 V-Band Turbine Discharge Flange |
| PTP074-3060 | Pro Mod 4" Turbine Discharge Flange (ALUM) |
| PTP074-3062 | Pro Mod 4" Turbine Discharge Flange (MS) |
| PTP074-3064 | Pro Mod 4.5" Turbine Discharge flange (ALUM) |
| PTP074-3066 | Pro Mod 4.5" Turbine Discharge flange (MS) |
| PART NUMBER (OIL DRAIN) | DESCRIPTION |
| PTP074-2005 | Med/Large Frame Oil Drain Flange |
| PTP074-2008 | Small Frame Oil Drain Flange -10AN |
| PTP074-2011 | T3/T4 Oil Drain Flange 1/2" NPT |
| PTP074-2013 | T3/T4 Oil Drain Flange 3/8" NPT |
| PTP074-2017 | GT28R/GT30R/GT35R/GT42R Oil Drain Flange |



Hoses

| PART NUMBER | I.D. SIZE | COLOR | UOM |
|--|---------------|-------|-------------|
| Straight Hoses 4-ply Nomex Silicone | | | |
| PTP076-2000 | 2" | Black | Inch |
| PTP076-2003 | 2.5" | Black | Inch |
| PTP076-2006 | 3" | Black | Inch |
| PTP076-2009 | 4" | Black | Inch |
| PTP076-2012 | 3" | Black | 4" Long |
| PTP076-2015 | 3" | Black | 5" Long |
| Reducer Hoses 4-ply Nomex Silicone | | | |
| PTP076-3000 | 2" to 2.5" | Black | 3" Long |
| PTP076-3003 | 2" to 3" | Black | 4" Long |
| PTP076-3004 | 2" to 3" | Black | 6" Long |
| PTP076-3006 | 2.5" to 3" | Black | 5" Long |
| PTP076-3009 | 2.5" to 3" | Black | 3" Long |
| PTP076-3012 | 3" to 3.5" | Black | 3" Long |
| PTP076-3015 | 3" to 4" | Black | 3 1/4" Long |
| PTP076-3018 | 3.5" to 4" | Black | 3 1/4" Long |
| PTP076-3020 | 3.625" to 3" | Black | 3 1/4" Long |
| PTP076-3022 | 3.825" to 3" | Black | 3 1/4" Long |
| Hump Hoses 4-ply Nomex Silicone | | | |
| PTP076-4000 | 2.00" ID x 3" | Black | 3 1/8" |
| PTP076-4002 | 2.50" ID x 3" | Black | 3 1/8" |
| PTP076-4004 | 3.00" ID x 3" | Black | 3 1/8" |
| PTP076-4006 | 3.50" ID x 3" | Black | 3 1/8" |
| Elbow Hoses 4-ply Nomex Silicone | | | |
| PTP076-5000 | 2.5" ID; 45° | Black | 10" Legs |
| PTP076-5002 | 3.0" ID; 45° | Black | 10" Legs |
| PTP076-5030 | 2.5" ID; 90° | Black | 10" Legs |
| PTP076-5032 | 3.0" ID; 90° | Black | 10" Legs |

Weld on Aluminum Elbows

Available in 2", 2.5" and 3" diameters



BOOST

Control

*"That unit's music to my ears when it opens!"
- Tova Chang*

Precision 39mm Wastegates

The Precision PW39 39mm external wastegate is made from high grade, high temperature stainless steel and billet aluminum components for the best strength, style and function. A 347 stainless investment cast valve body and Nickel Chromium Alloy valve provide consistent performance without fatigue or failure while also allowing for accurate boost control. The PW39 comes with 5 different 17-7 precipitation hardened springs for further adjustment of boost levels along with standard bolt-style flange for easy mounting. This 39mm wastegate is also designed to be a direct fit replacement for other units on the market.



Precision 46mm Wastegates

The Precision PW46 46mm external wastegate is made from high grade, high temperature stainless steel and billet aluminum components. It features PTE's purpose-designed wastegate diaphragm and a 347 stainless investment cast valve body which has a smooth internal surface to give the unit exceptional flow while allowing for accurate boost control. The PW46 features Nickel Chromium Alloy valve and comes with 5 different 17-7 precipitation hardened springs so that it can be configured to control boost from 1.5 PSI up to 25.5 PSI. This 46mm wastegate is also designed to be a direct fit replacement for other units on the market.



Precision 66mm Wastegates

The Precision PW66 66mm external wastegate is perfect for the boost enthusiast looking to get the most from their turbocharged car, truck, or any other vehicle. Made from high grade, high temperature stainless steel and billet aluminum grade, high component, the PW66 also uses a 347 stainless investment cast valve body to provide consistent performance without fatigue or failure while allowing for accurate boost control. This unit features an internal Nickel Chromium Alloy valve and 4 individual ports along with a V-band clamp that holds the wastegate cap to the main body structure to allow for an infinite number of wastegate location positions. What makes this unit truly unique are the special, stabilizing "Precision Pins" which prevent the inlet and outlet flange from spinning.



All units feature a black anodized 6061 aluminum billet wastegate cap and are generally compatible with most aftermarket and electronic boost controllers. Additionally, **Precision Turbo's** external wastegates come with all stainless steel inlet and outlet flanges and clamps needed for installation.

As an added bonus, all **Precision Turbo's** external wastegates are warranted to be free from manufacturer's defect for a period of 12 months or 12,000 miles.



PTE's Blow-Off Valves

Perfect for anything from street cars to race cars and more, PTE's all-new blow-off valves are available in both 52mm and 66mm configurations to meet your specific needs. Revolutionary in design, these units break the mold when it comes to BOV technology and performance. Extremely innovative without sacrificing durability or performance, PTE's BOVs provide the highest flow and are extremely tunable. As an added bonus, each Precision Turbo & Engine blow-off valve is warranted to be free from manufacturer's defect for a period of 12 months or 12,000 miles. Available Spring 2012.

TiAL 50mm Blow Off Valve

This 6061 aluminum alloy, CNC-machined unit features a 50.5mm valve with excellent flow capacity for either supercharged or turbocharged applications. The valve seal utilizes a Viton O-ring that is clamped in place to prevent the possibility of sticking to the seat and pulling out. **TiAL's** incorporation of a V-band aluminum mounting clamp gives a very clean and unique appearance while the valve stem and guide are Teflon-lubricated, hard anodize-coated for wear resistance. Each **TiAL** 50mm Blow Off Valve comes with a machined aluminum banjo-type air fitting and bolt with an oversized 10mm hose barb for quick response. Flanges sold separately.



TiAL
SPORT



NLR AMS 1000 Boost Controller

Precision Turbo is proud to be a distributor for the NLR AMS-1000 boost controller. This boost controller is the secret that top teams are using and is found on some the world's quickest and fastest bikes, cars, snowmobiles, and boats. Think about it...the AMS 1000 boost controller is engineered and designed to control boost on 600hp street tire (6 inch contact patch), no wheelie bar bikes that run mid 7's at over 200MPH in the quarter mile. Imagine what it can do for you!

ProCharger Race Bypass Valve

If you're looking for the ultimate in race bypass valves to prevent compressor surge and reduce wear on your engine, look no further than this **ProCharger** model. This unit is capable of supporting nearly 2,00 horsepower and can be found on some of the fastest turbocharged and supercharged race cars in the country. Additionally, each ProCharger race bypass valve comes with all necessary mounting hardware and a steel flange.



PRECISION
TURBO &
ENGINE

AIR - TO - AIR INTERCOOLER Cores

Precision Turbo is well known for our leadership in heat exchanger products and now that same cutting edge technology can be yours with our line of air-to-air intercooler cores. All of the cores listed here feature bar and plate construction which can withstand higher boost pressure and is much more resistant to damage from road hazards than traditional tube and fin designs. You can opt to use these high efficiency cores with your own end tanks or we can custom fabricate an intercooler to meet your unique specifications.

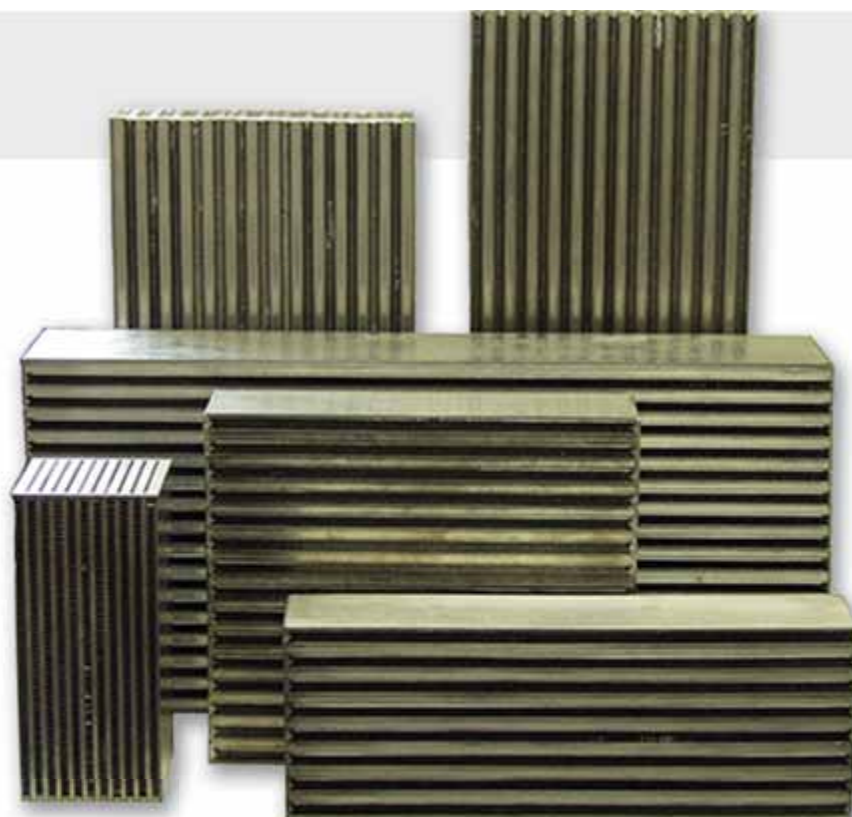


Air-To-Air Intercoolers Cores

| PART NUMBER | A LENGTH INCHES | B HEIGHT INCHES | C DEPTH INCHES | HP RATING |
|-------------|-----------------|-----------------|----------------|-----------|
| PIN051-1001 | 6.00 | 11.70 | 3.00 | 225 |
| PIN051-1009 | 6.00 | 12.00 | 4.50 | 325 |
| PIN051-1021 | 8.00 | 11.70 | 4.50 | 425 |
| PIN051-1053 | 13.00 | 17.35 | 3.00 | 680 |
| PIN051-2101 | 18.00 | 6.40 | 3.50 | 400 |
| PIN051-1124 | 18.00 | 12.00 | 3.00 | 650 |
| PIN051-2160 | 24.00 | 8.00 | 3.50 | 675 |
| PIN051-2182 | 24.00 | 10.00 | 3.50 | 775 |
| PIN051-1216 | 27.00 | 10.50 | 3.50 | 850 |

Don't see what you need?

Don't sweat it. We can source nearly any size intercooler core imaginable.
Give us a call to discuss your project today!



Intercoolers

Precision Universal Front Mount Intercoolers

Precision Turbo's universal front mount intercoolers feature high density cores with bar and plate construction, which allows each unit to better function as a heat sink, and that's a big advantage in stop and go traffic. This design is also much less susceptible to road hazard damage and can handle higher boost levels than comparable tube and fin designs. Each intercooler comes with contoured cast aluminum end tanks with mounting tabs. Drilled and tapped mounting holes are included with all except PIN053-1005.

Air-To-Air Intercoolers

| PART NUMBER | HP RATING | OVERALL DIMENSIONS | AIR IN/OUT |
|-------------|-----------|-------------------------------|------------|
| PIN053-1005 | 350-hp | 26 3/4"L x 6 1/4"H x 3 1/2"D | 2 1/2" |
| PIN053-1010 | 600-hp | 31 1/2"L x 8"H x 3 1/2" D | 2 3/4" |
| PIN053-1015 | 750-hp | 31 1/2"L x 10 5/8"H x 3 1/2"D | 2 3/4" |
| PIN053-1020 | 825-hp | 34 1/2"L x 10 1/2"H x 3 1/2"D | 2 3/4" |



1986-1987 Buick Turbo Regal Stock Location Intercooler

| PART NUMBER | HP RATING | INSTALLED LOCATION | OVERALL DIMENSIONS | AIR IN/OUT |
|-------------|-----------|--------------------|--------------------------|------------|
| PIN053-2005 | 750 | Stock Location | 13" L x 17 1/4" H x 3" D | 3" |

Stock Location Intercooler

1986-1987 Buick Grand National & T-Type

Owners of the 1986-1987 Buick Turbo Regals have been raving about this product since it was introduced a few years ago. Made with a high efficiency bar and plate core with 18 flow and 19 cooling rows, this kit comes with cast aluminum end tanks that have been specifically contoured to optimize air flow. Included with the kit is a new mandrel bent 3" inlet up pipe, a custom aluminum shroud and all the hoses, clamps, brackets, and mounting hardware for a true direct fit, bolt on installation.



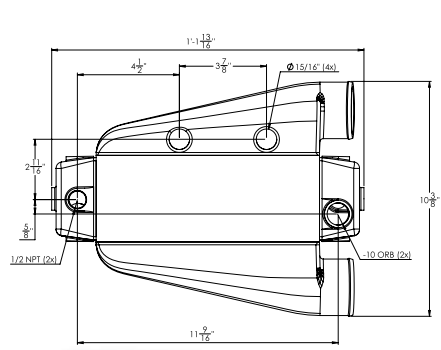
"I have used Precision intercoolers for several years and the quality is top notch."
— Reid Kusano

Reid Kusano

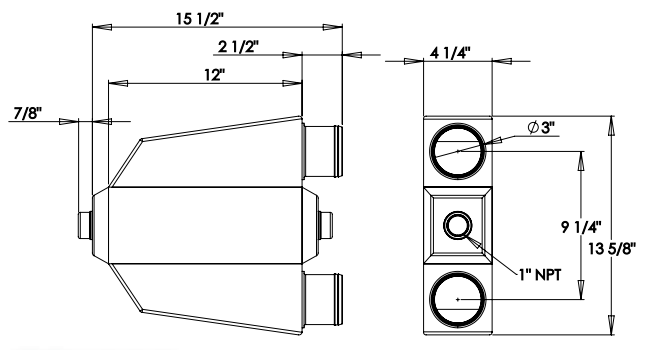
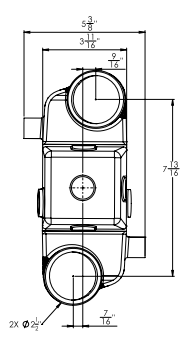
Honda CRX using a 750HP PTE front mount intercooler (part number PIN053-1015) and 67mm CEA turbocharger

Liquid AIR - TO- AIR Intercoolers

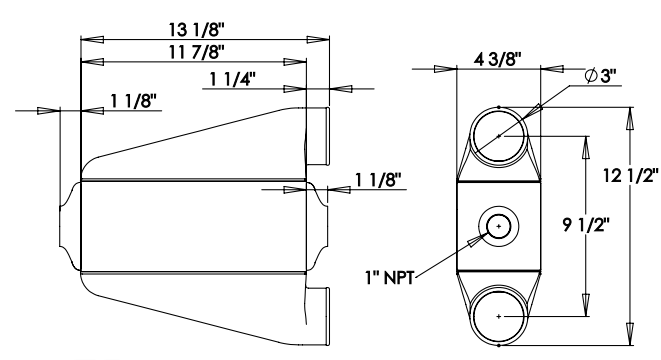
Precision Turbo has been an industry leader for years by constantly innovating and developing cutting-edge technology for heat exchanger products. From the street to the strip, our liquid-to-air intercoolers have been behind the scenes in many of the sport's best known, record-setting turbocharged and supercharged vehicles. Keeping charge air temperature down is crucial to getting the best performance possible out of your engine and you can trust PTE's intercoolers to exceed expectations. You know Precision will always keep you well ahead of the competition, so don't accept an imitation or knock-off intercooler that can ultimately cost you dollars and horsepower! We offer a versatile line of standard intercoolers that are in stock and ready to go when you need them most.



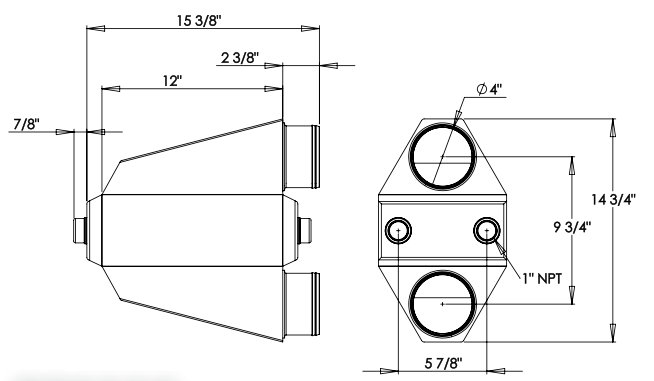
PT501



PT1000



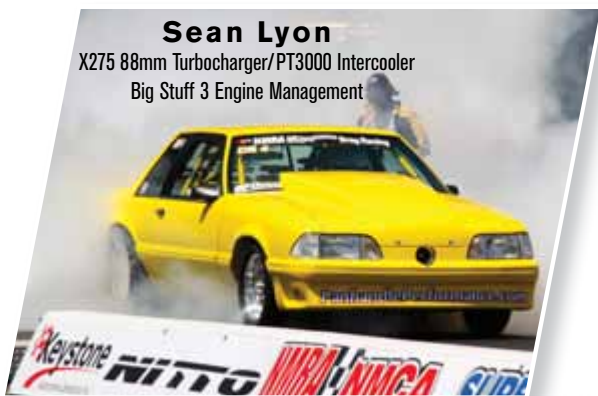
PT1001



PT2000

Sean Lyon

X275 88mm Turbocharger/PT3000 Intercooler
Big Stuff 3 Engine Management



Tim Lynch

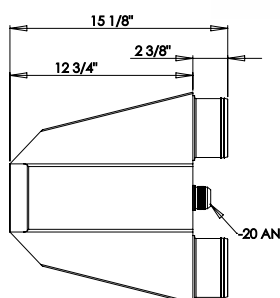
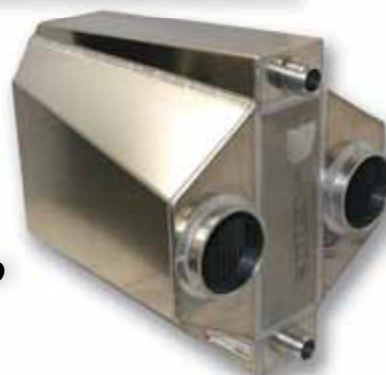
Twin Pro Mod 94 Turbochargers/PT4000 Intercooler
Big Stuff 3 Engine Management



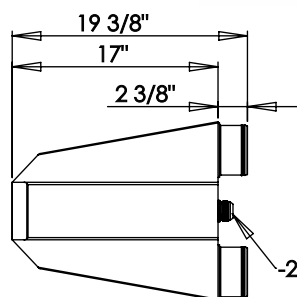
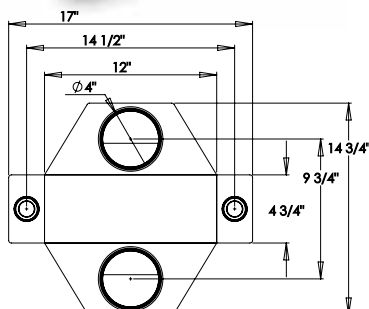
PT3000



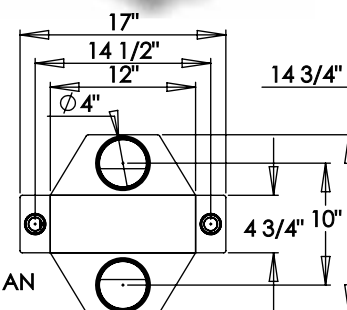
PT4000



PT3000



PT4000



**Need something a little more
custom for you application?**

Precision Turbo is proud to offer custom made air-to-air and liquid-to-liquid intercoolers.

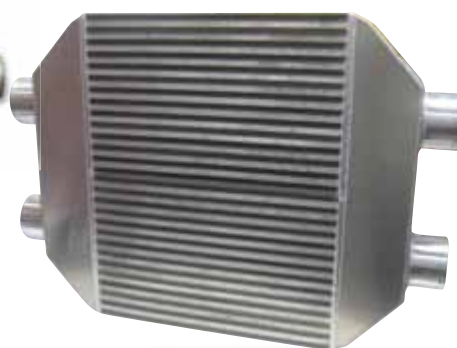
Call for more information on how to get the best fit and performance for your application today!



CUSTOM PT2000



**CUSTOM
LIQUID-TO-AIR INTERCOOLER**



**CUSTOM
AIR-TO-AIR INTERCOOLER**

FUEL SYSTEM**Components**

Selecting the right fuel system components can be a stressful experience. **Precision Turbo** has long been a leader in Aeromotive, Walbro, Waterman, and Weldon products. Combine this with smaller, miscellaneous parts ranging from clamps to fuel rails, and you've got a one stop fuel system shop ready to get you going today!

Automotive

With their unique combination of ultra-high performance, durability, and reliability, Aeromotive's in-line pumps leave the competition behind. All Aeromotive fuel pumps are designed to meet the high performance demands of your application with durability and reliability. Whether you're running 200HP or 2000HP, carbureted or fuel injected, Aeromotive pumps optimize flow and line pressure. In addition to their line of fuel pumps, Aeromotive regulators beat the competition with the best of all worlds; Outstanding, consistent performance from equipment that's built to last. Aeromotive delivers more flow than similar regulators thanks to a custom, convoluted diaphragm that maximizes piston stroke while minimizing stress. Every model uses a poppet designed specifically for that regulator, and a diaphragm fabricated from a proprietary elastomer material. The standard vacuum boost port delivers perfect 1:1 boost reference and makes these regulators ideal for turbocharged and supercharged engines.

**Walbro**

One of the leading original equipment fuel pump suppliers, Walbro Automotive supplies a wide range of electric fuel pumps and related fuel system components to the automotive market. These pumps are widely known for their quality and dependability worldwide. Walbro in-tank electric fuel pumps utilize a proven gerotor design. The outside dimensions, however, are compact enough to fit existing hanger assemblies, without modification. With pumps available for many applications, you can be assured you'll receive the pump and installation kit specifically designed for your vehicle.

**Weldon**

With legendary performance and reliability, Weldon fuel pumps are the ones you can trust with your mega dollar engine. Weldon racing pumps were developed using 68 years of aerospace/military experience, materials and technology to deliver high flow, high-pressure fuel to racing engines with unprecedented reliability. With pumps and regulators available for both fuel injection and carbureted applications, Weldon Pump continues to be on the cutting edge of fuel delivery products.



Injectors

Upgrading fuel injectors may be a necessity when changing turbochargers, exhaust headers, throttle bodies, fuel systems, or cylinder heads. It's important to insist on the best. **Precision Turbo** brand fuel injectors are individually hand selected, flow checked and matched to within 1% of each other for optimum performance from your vehicle. All horsepower ratings are based upon a 90% duty cycle at 43.5 psi of fuel pressure based upon a BSFC of .50. Compatible with all known aftermarket drivers (*unless otherwise noted*).

Sport Compact Injectors

| PART NUMBER | SIZE C/C | IMPEDANCE | NOZZLE | EACH INJECTOR SUPPORTS |
|--------------|----------|-----------|-------------|------------------------|
| PFU042-0310 | 310 | High | Disc | 52 HP |
| PFU042-0400 | 400 | High | Ball & Seat | 67 HP |
| PFU042-0440 | 440 | High | Disc | 77 HP |
| PFU042-0525 | 525 | High | Ball & Seat | 90 HP |
| PFU042-0580 | 580 | Low | Ball & Seat | 94 HP |
| PFU042-0650 | 680 | Low | Ball & Seat | 99 HP |
| PFU042-0651* | 650 | High | Disc | 117 HP |
| PFU042-0780 | 780 | Low | Ball & Seat | 135 HP |
| PFU042-0880 | 880 | Low | Ball & Seat | 151 HP |
| PFU042-0950 | 1000 | Low | Ball & Seat | 171 HP |
| PFU042-1200 | 1200 | Low | Ball & Seat | 216 HP |
| PFU042-1600 | 1600 | Low | Pintle | 297 HP |

Sport Compact Mitsu Injectors

| PART NUMBER | SIZE C/C | IMPEDANCE | NOZZLE | EACH INJECTOR SUPPORTS |
|-------------|----------|-----------|---------------|------------------------|
| PFU043-0440 | 440 | High | Disc | 77 HP |
| PFU043-0500 | 525 | High | Ball & Seat | 90 HP |
| PFU043-0540 | 550 | Low | Disc | 94 HP |
| PFU043-0580 | 580 | Low | Ball & Seat | 99 HP |
| PFU043-0680 | 680 | Low | Ball & Seat | 117 HP |
| PFU043-0780 | 780 | Low | Ball & Seat | 135 HP |
| PFU043-0880 | 880 | Low | Ball & Seat | 151 HP |
| PFU043-0950 | 1000 | Low | Ball & Seat | 171 HP |
| PFU043-1200 | 1200 | Low | Ball & Seat | 216 HP |
| PFU043-1600 | 1600 | Low | PintleForward | 297 HP |

Domestic Injectors

| PART NUMBER | SIZE lb/hr | IMPEDANCE | NOZZLE | EACH INJECTOR SUPPORTS |
|----------------|------------|-----------|-------------|------------------------|
| PFU041-0240 | 24 | High | Pintle | 43 HP |
| PFU041-0300 | 30 | High | Disc | 54 HP |
| PFU041-0370 | 37 | High | Ball & Seat | 67 HP |
| PFU041-0380 | 38 | High | Disc | 68 HP |
| PFU041-0420 | 42.5 | High | Disc | 77 HP |
| PFU041-0421 | 42.5 | High | Multec 2 | 77 HP |
| PFU041-0500 | 50 | High | Ball & Seat | 94 HP |
| PFU041-0550 | 55 | Low | Ball & Seat | 99 HP |
| PFU041-0650 | 65 | Low | Ball & Seat | 117 HP |
| PFU041-0651* | 65 | High | Disc | 117 HP |
| PFU041-0652** | 65 | High | Disc | 117 HP |
| PFU041-0750 | 75 | Low | Ball & Seat | 135 HP |
| PFU041-0840 | 84 | Low | Ball & Seat | 151 HP |
| PFU041-0950 | 95 | Low | Ball & Seat | 171 HP |
| PFU041-1200 | 120 | Low | Ball & Seat | 216 HP |
| PFU041-1600 | 165 | Low | Pintle | 297 HP |
| PFU041-2250 | 225 | Low | Pencil | 405 HP |
| PFU041-6000*** | 600 | Low | Pintle | 462 HP |

*Tall **Short ***For use with alcohol; based on 85PSI

***Must be used with specific BS3 EMS

**Call us about
injector connectors, fuel
rails, replacement o-rings,
and injector bungs!**



ENGINE MANAGEMENT**Systems****Big Stuff 3**

Widely recognized as the industry leader in electronic engine and powertrain controllers for the performance aftermarket, **Big Stuff 3** manufactures a variety of different systems to fit a multitude of engine configurations. In its base form, the GEN3 SEFI system includes WBO2 control, individual cylinder fuel and spark compensations, and the following additional standard features:

- Configurable Load & RPM axes to enable optimization in desired operating range
- Internal data logging (DAI) - 52 channels at 50 times per second
- Capable of driving smart and dumb Coil-on-Plug (COP) ignitions with the stock sensors
- Injector phasing, at the start of the fuel injection event
- Programmable "peak-&hold" injector drivers with current chopping capability. Software configurable ignition options for GM HEI, Ford TFI, LT1, V6-DIS, and IPU
- Individual cylinder fuel & spark compensation. Turbocharged starting line timing curve
- Integrated 2-Step for Coil-On-Plug (COP) ignitions
- 1, 2, 3, 4 & 5 BAR MAP sensor compatible
- Improved transient fueling algorithms
- Programmable injector opening vs. battery voltage
- Seamless decel fuel cut-off



In addition to the standard features, **Big Stuff 3** offers these optional performance upgrades so that you can custom tailor the system to suit your needs:

- Wide-band methanol control down to 2.9:1 A/F Ratio
- Engine Torque Management (ETM) to manage torque in 32 different levels; New SR2 traction control with 1st gear power management. With this feature, control is now a function of spark retard
- CAN interface with Racepak Ultra-dash and VNET, as well as EGT monitoring and recording.
- CAN interface for EGT monitoring and recording
- E10 - E85 ethanol systems
- Sequential fuel control for up to 24 injectors low impedance injectors in a staged configuration.
- 2 to 3-step starting line control for distributor and Coil-on-Plug (COP) systems
- External data logging (DAE) for recording fuel and oil pressure, driveshaft speed, turbo shaft speed, pan vacuum, etc.
- DAE-2 allows for an accelerometer and transmission line pressure (500psi) input
- 4 stage nitrous system control
- New system available for the 6.1L HEMI engine
- New system available for the Ford Coyote engine program (*for NHRA use only*)
- SR2 for Coil-on-Plug (COP) available Spring 2012

**Champions and Record Holders choose
Big Stuff 3 Power Train Management systems.
Shouldn't You?**



**George Poteet's
Blowfish**

PT106 Turbocharger/PT2000 Intercooler
Big Stuff Engine Management

AEM

AEM's Series 2 Programmable Engine Management System is more powerful than the earlier, Series 1 models. Like its predecessor, AEM's Series 2 Plug & Play EMS plugs directly into a vehicle's factory ECU harness and requires no additional wiring or hardware. Windows™ compatible software (2000, XP, NT, 98, 95, ME) makes the task of copying, viewing and manipulating data as simple as a click of the mouse. Their new AEMTUNER software is infinitely adjustable, and allows tuners to program virtually any combination of engine control, power adders and auxiliary devices, and accurately delivers proper amounts of fuel and correct ignition timing for any boost level or operating condition.



Acquisition



Innovate Motorsports Digital MTX Series Air/Fuel Ratio Gauge

The new **Innovate Motorsports Digital MTX Series Air/Fuel Ratio Gauge** utilizes the only 100% digital Wideband air/fuel ratio technology on the market! The award-winning patented DirectDigital™ technology used is faster and more accurate than common "UEGO" gauges and is now more affordable! In addition, the gauge features a water resistant casing, interchangeable faceplates and bezels, and 2 fully programmable linear analog outputs for use with aftermarket engine managements systems and dataloggers! Not exactly what you are looking for? Don't worry, Precision Turbo carries the entire Innovate Motorsports product line.

Call us at (219) 996-7832 to speak with
a member of our helpful and knowledgeable staff.



Racepak

Racepak is the leading manufacturer of data loggers and high-performance dashes. Go faster, make more power and manage your racecar's tune more effectively by gathering every bit of data possible with Racepak! From loggers that can gather a dizzying amount of data in seconds to ultra high-tech dashes that display (and replay) everything you need to know quickly and easily, Racepak has a wide variety of products that incorporate the latest and greatest features and technology.

Solving the wiring complexity of the modern race car, the **Racepak SmartWire** is a fully programmable power control module. While traditional wiring provides control of vehicle electronic components through the routing of wiring to single or multiple fuses, relay and circuit breaker panels, the Racepak Smartwire functions as a central "command center" for all vehicle wiring. The design of the module serves to reduce installation weight and clutter while the exclusive single cable V-Net technology integrates seamlessly with Racepak's data loggers and displays.

**Precision Turbo & Engine is proud to be
a stocking distributor of the full Racepak line!
Please contact us for more information.**

Throttle BODIES & INTAKE Plenums

Precision Turbo has the answer to your electronic fuel injection hardware needs with throttle bodies, plenums, wiring harnesses, sensors and more. Give us a call today for the latest products and best available pricing.

Ford Mustang

CNC Machined, Billet Aluminum, Hardware & Gaskets Included with Most Throttle Bodies

| PART NUMBER | PRODUCT DESCRIPTION | YEAR |
|-------------|---------------------------------|---------|
| PEP024-1026 | 65mm TB | 1986-93 |
| PEP024-1029 | 65mm TB Race | 1986-93 |
| PEP024-1032 | 70mm TB | 1986-93 |
| PEP024-1035 | 70mm TB Race | 1986-93 |
| PEP024-1040 | 75mm TB | 1986-93 |
| PEP024-1043 | 75mm TB Race | 1986-93 |
| PEP024-1048 | 80mm TB Race | 1986-93 |
| PEP024-1050 | 85mm TB Race | 1986-93 |
| PEP024-1052 | 90mm TB Race | 1986-93 |
| PEP024-1054 | 90mm Wiggins Clamp TB Race | 1986-93 |
| PEP024-1055 | 90mm Wiggins Clamp TB Kit | 1986-93 |
| PEP024-1056 | 105mm Full TB Race | 1986-93 |
| PEP024-1038 | 70mm 2V TB | 1996-04 |
| PEP024-1046 | 75mm 2V TB | 1996-04 |
| PEP024-1060 | Cobra & Bulitt Ellipse TB | 1996-98 |
| PEP024-1061 | Special Cobra Oval TB | 1996-98 |
| PEP024-1062 | Cobra TB & Power Inlet | 2003 |
| PEP024-1063 | Cobra TB & Power Inlet (polish) | 2003 |



Plenums

| PART NUMBER | INLET SIZE | ELBOW | ORIENTATION | FLANGE |
|-------------|------------|------------|-------------|--------|
| PEP022-1008 | 65mm | N/A | Forward | Buick |
| PEP022-1009 | 65mm | N/A | Forward | Buick |
| PEP022-1010 | 70mm | N/A | Forward | Buick |
| PEP022-1011 | 70mm | N/A | Forward | Buick |
| PEP023-1005 | 90mm | 100-degree | Forward | 4150 |
| PEP023-1006 | 90mm | 90-degree | Forward | 4150 |
| PEP023-1008 | 90mm | 90-degree | Sideways | 4150 |
| PEP023-1009 | 90mm | 100-degree | Forward | 4500 |
| PEP023-1010 | 90mm | 90-degree | Forward | 4500 |
| PEP023-1014 | 90mm | 100-degree | Sideways | 4500 |
| PEP023-1015 | 105mm | 100-degree | Forward | 4500 |

Wilson Throttle Bodies

CNC Machined, Billet Aluminum, Hardware & Gaskets Included with Most Throttle Bodies

| PART NUMBER | PRODUCT DESCRIPTION |
|-------------|---------------------|
| PEP024-1500 | 65mm Throttle Body |
| PEP024-1502 | 70mm Throttle Body |
| PEP024-1504 | 75mm Throttle Body |
| PEP024-1506 | 80mm Throttle Body |
| PEP024-1508 | 90mm Throttle Body |
| PEP024-1510 | 95mm Throttle Body |
| PEP024-1512 | 105mm Throttle Body |
| PEP024-1536 | 4500 Throttle Body |

WILSON
MANIFOLDS



Grand Buick National

CNC Machined, Billet Aluminum, Hardware & Gaskets Included

| PART NUMBER | PRODUCT DESCRIPTION | YEAR |
|-------------|---------------------|---------|
| PEP024-1005 | 65mm Throttle Body | 1986-87 |
| PEP024-1008 | 70mm Throttle Body | 1986-87 |

Chevrolet Camaro

CNC Machined, Billet Aluminum, Hardware & Gaskets Included

| PART NUMBER | PRODUCT DESCRIPTION | YEAR |
|-------------|------------------------|-------------|
| C75-21 | 75mm LS1 Throttle Body | 1998-99.5 |
| C75-2 | 75mm LS1 Throttle Body | 1999.5 & Up |

Dodge Viper

CNC Machined, Billet Aluminum, Hardware & Gaskets Included

| PART NUMBER | PRODUCT DESCRIPTION | YEAR |
|-------------|---------------------|-------------|
| PEP024-1023 | 65mm RT-10 | 1998-99.5 |
| PEP024-1024 | 70mm GTS | 1999.5 & Up |

Ford GT

CNC Machined, Billet Aluminum, Hardware & Gaskets Included

| PART NUMBER | PRODUCT DESCRIPTION | YEAR |
|-------------|-----------------------|---------|
| PEP024-1065 | Ford GT Dual Blade TB | 2005-06 |

WARRANTIES & **Policies**

**PRECISION
TURBO & ENGINE**
PHONE: 219.996.7832
FAX: 219.996.7749

Warranty

Each **Precision Turbo** brand turbocharger is warranted to be free from manufacturer's defects for a Period of 12 months or 12,000 miles, whichever occurs first, from date of original invoice. Manufacturer's Warranty otherwise applies. Seller expressly disclaims all implied warranties of merchantability and/or fitness for a particular purpose.

Precision Turbo will repair or replace at its discretion any precision turbo branded product that proves defective in material or workmanship under normal installation, use and service. In the case of any warranty claim with regards to defects in material or workmanship, the product in question should be returned freight prepaid to the address shown below.

This warranty does not cover damage or failure of components due to normal wear and tear. There is no warranty on any parts used in race applications or on products that have been physically altered, improperly installed or not maintained. Seller's warranty is in lieu of all other warranties, express or implied.

Returns

Returns for credit or exchange are allowable only with a Returned Goods Authorization (RGA) number for 30 days from date of shipment. Restocking fees may apply. Product must be new or in resalable condition and returned at the customer's expense freight prepaid. All claims for shipping damage must be placed with the carrier.

Disclaimer

Precision Turbo does not warrant the accuracy or completeness of the information contained in this catalog. Any information and specifications contained in this catalog are provided "as is" without any representation or warranty, express or implied, of any kind, including, but not limited to, warranties of merchantability, non-infringement, or fitness for any particular purpose. Some jurisdictions do not allow for the exclusion of implied warranties, so the above exclusions may not apply to you.

Any cause of action you may have with respect to your use of this catalog must be commenced within one (1) year after the claim or cause of action arises within Porter County, Indiana. If for any reason a court of competent jurisdiction finds any provision of the agreement or portion thereof, to be unenforceable, that provision shall be enforced to the maximum extent permissible so as to affect the intent of the agreement, and the remainder of this agreement shall continue in full force and effect.

Federal, state or provincial laws, rules and regulations in the U.S., Canada or elsewhere may prohibit the removal or modification of components that were installed on motor vehicles or engines by the original equipment manufacturer in order to meet emissions requirements or to comply with safety regulations applicable to engines or vehicles manufactured for use on public roads. Removal of such components and installation of **Precision Turbo** products may be illegal and considered to be emissions-related tampering under applicable laws, rules and regulations. Motor vehicles or engines equipped with **Precision Turbo** products may not be used on public roads, as installation of such products could cause the vehicles or engines to be non-compliant with applicable emissions and/or safety standards.

Installation of precision turbo products (or similar products from other manufacturers) on a motor vehicle or engine may void, reduce or otherwise adversely affect any warranties given by the manufacturer or seller of the vehicle, engine or other component parts. Precision turbo shall not be liable for any such adverse effect on such other manufacturers' or sellers' warranties. In no event shall precision turbo be liable to any person or entity for any direct, indirect, special, consequential or other damages (including, without limitation, any lost profits, business interruption, loss of information or programs or other data on your information handling system) that are related to the use of, or the inability to use, the content, materials, and functions of the site or any linked website, even if expressly advised of the possibility of such damages.



facebook.com/PrecisionTurbo



twitter.com/PrecisionTurbo



youtube.com/precisionturbonet

MAILING ADDRESS
Precision Turbo & Engine
P.O. Box 425 | Hebron, IN 46341

SHIPPING ADDRESS
Precision Turbo & Engine
616A South Main Street | Hebron, IN 46341



Precision Turbo and Engine

P.O. Box 425, Hebron, IN 46341

PHONE: 219.996.7832 | FAX: 219.996.7749 | www.precisionturbo.net

facebook.com/PrecisionTurbo | twitter.com/PrecisionTurbo | youtube.com/precisionturbonet



join us on
facebook



follow us on
twitter



watch us on
youtube

